

CREATE  
YOUR STYLE  
with SWAROVSKI ELEMENTS

INNOVATION DESIGN FEATURE

# “ETHNIC STRINGS” COLLAR



*Featuring...*

*New* Color Blend Beads,

*New* GemColor Crystal Pearls &

*New* Crystal Luminous Green Pendant.

# “ETHNIC STRINGS” COLLAR



## SWAROVSKI ELEMENTS

	Product Group	Article No.	Amount	Size	Color	Color Code
	Beads	5000	7 pcs.	8 mm	Caribbean Blue Opal	394
	Beads	5000	3 pcs.	8 mm	Dark Red Coral	396
	Beads	5000	9 pcs.	8 mm	Indian Red	374
	Beads	5000	13 pcs.	8 mm	Indicolite	379
	Beads	5000	4 pcs.	8 mm	Mint Alabaster	397
	Beads	5000	6 pcs.	8 mm	Pacific Opal	390
	Beads	5000	4 pcs.	8 mm	Siam	208
	Beads	5000	4 pcs.	10 mm	Burgundy Blue Zircon Blend	732
	Beads	5000	7 pcs.	10 mm	Fern Green Topaz Blend	724
	Beads	5525	6 pcs.	19 mm	Crystal Luminous Green	001 LUMGF
	Beads	5525	5 pcs.	28 mm	Crystal Golden Shadow	001 GSHA
	Beads	5535	5 pcs.	19x5 mm	Indicolite	379
	Crystal Pearls	5810	26 pcs.	8 mm	Crystal Jade Pearl	001 JAPRL
	Crystal Pearls	5810	9 pcs.	8 mm	Crystal Red Coral Pearl	001 LPPR
	Crystal Pearls	5810	32 pcs.	12 mm	Crystal Lapis Pearl	001 LPPR
	Crystal Pearls	5840	1 pc.	6 mm	Crystal Red Coral Pearl	001 LPPR
	Crystal Pearls	5840	16 pcs.	10 mm	Crystal Lapis Pearl	001 LPPR
	Crystal Pearls	5840	20 pcs.	10 mm	Crystal Red Coral Pearl	001 LPPR
	Pendants	6656	3pcs.	27 mm	Crystal Luminous Green	001 LUMGF

## Supplies & Tools

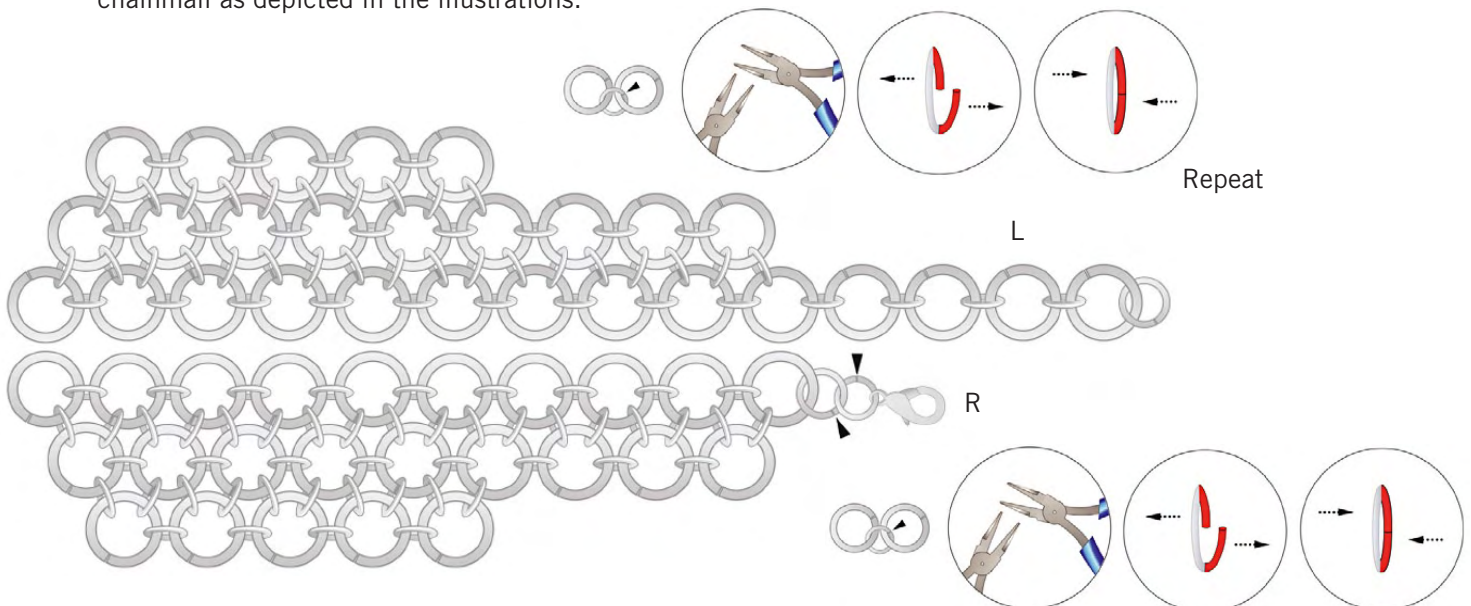
### Supplies

- 12x Crimping tube, silver antique
- 6x Wooden bead, 17mm
- 5x Head pin, silver antique
- 7x Jump ring, silver antique, 4mm
- 2x Jump ring, silver antique, 5mm
- 117x Jump ring, silver antique, 7mm
- 5x Jump ring, silver antique, 8mm
- 52x Jump ring, silver antique, 12mm
- 1x Lobster clasp, silver antique
- 28x Split ring, silver antique, 5mm
- 7x Split ring, silver antique, 6mm
- Tigertail, silver antique, Ø30mm, 3m

### Tools

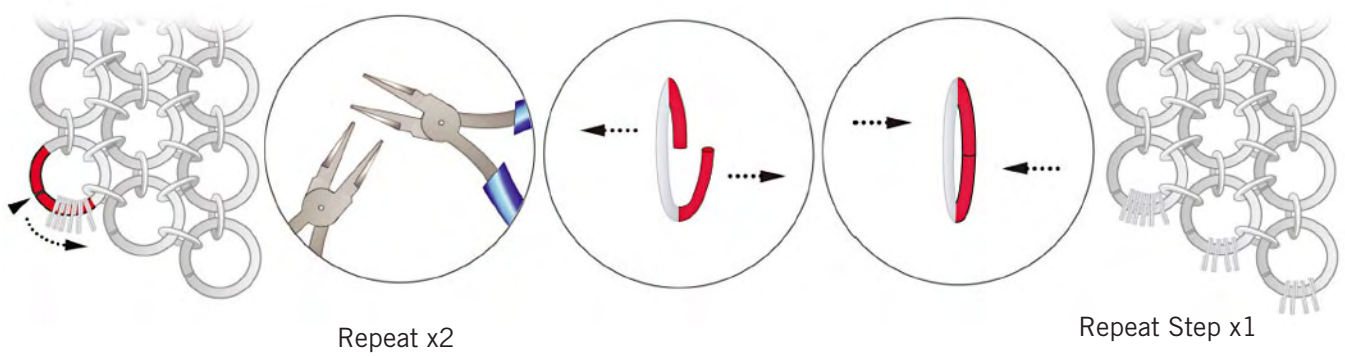
- Flat nose pliers
- Round nose pliers
- Side cutter

**STEP 1:** Create a chainmail necklace: Open a 7mm jump ring, insert two 12mm jump rings into it and close it. Using more jump rings, connect them to each other in order to create a left and a right part marked as “L” and “R” in the illustrations. Connect a lobster clasp and an 8mm jump ring using a 5mm jump ring to the R (Right) side of the chainmail as depicted in the illustrations.

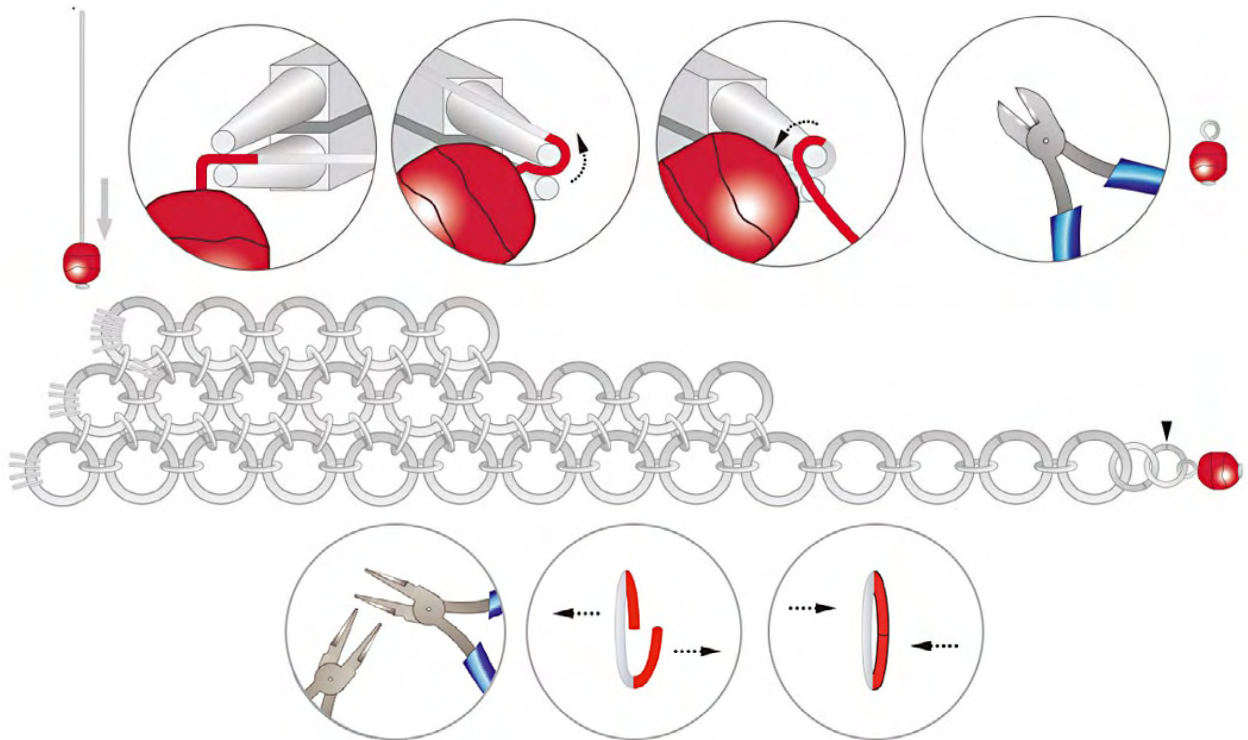




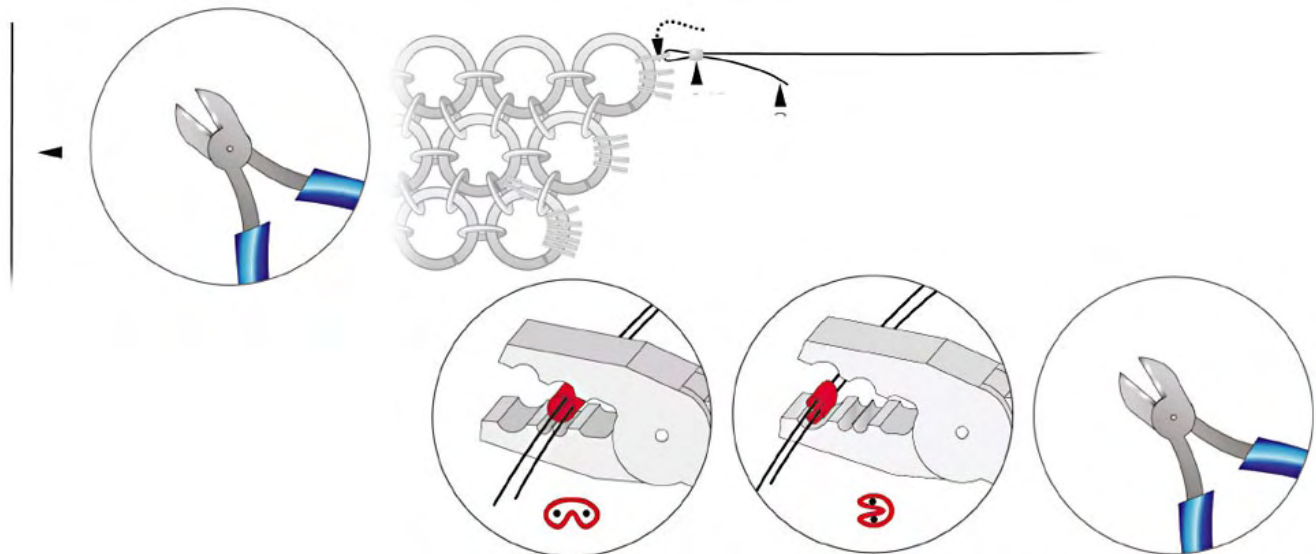
**STEP 2:** Open one of the jump rings and insert six 5mm split rings onto it. Similarly open the two adjoining jump rings and insert 4 split rings each into them. Repeat the entire step for the other side.



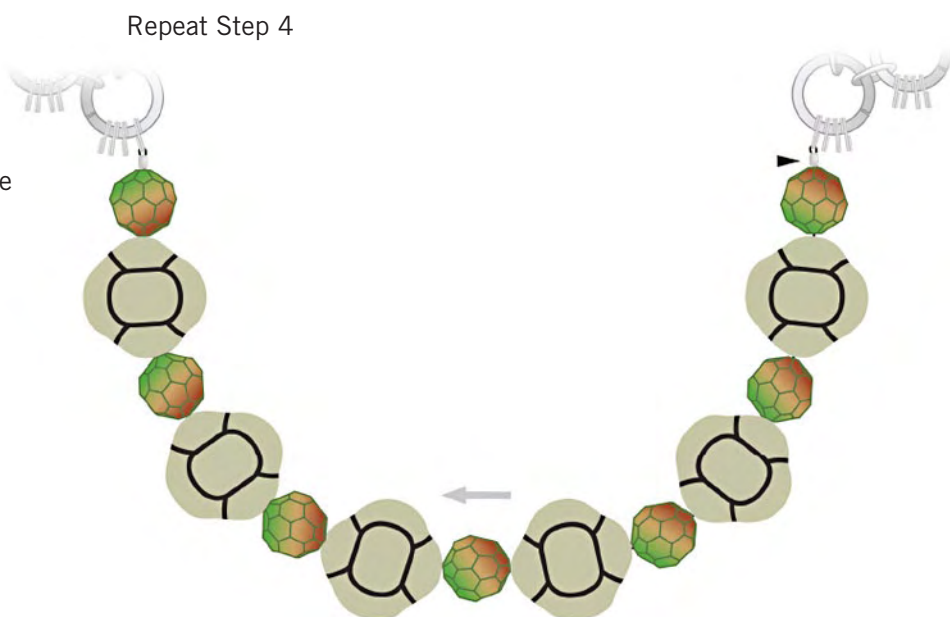
**STEP 3:** Insert a SWAROVSKI ELEMENTS Crystal Pearl article 5840 6mm, Crystal Red Coral Pearl onto a head pin. Form a loop onto the other end of it. Connect it onto the chainmail as shown with a 5mm and an 8mm jump ring.



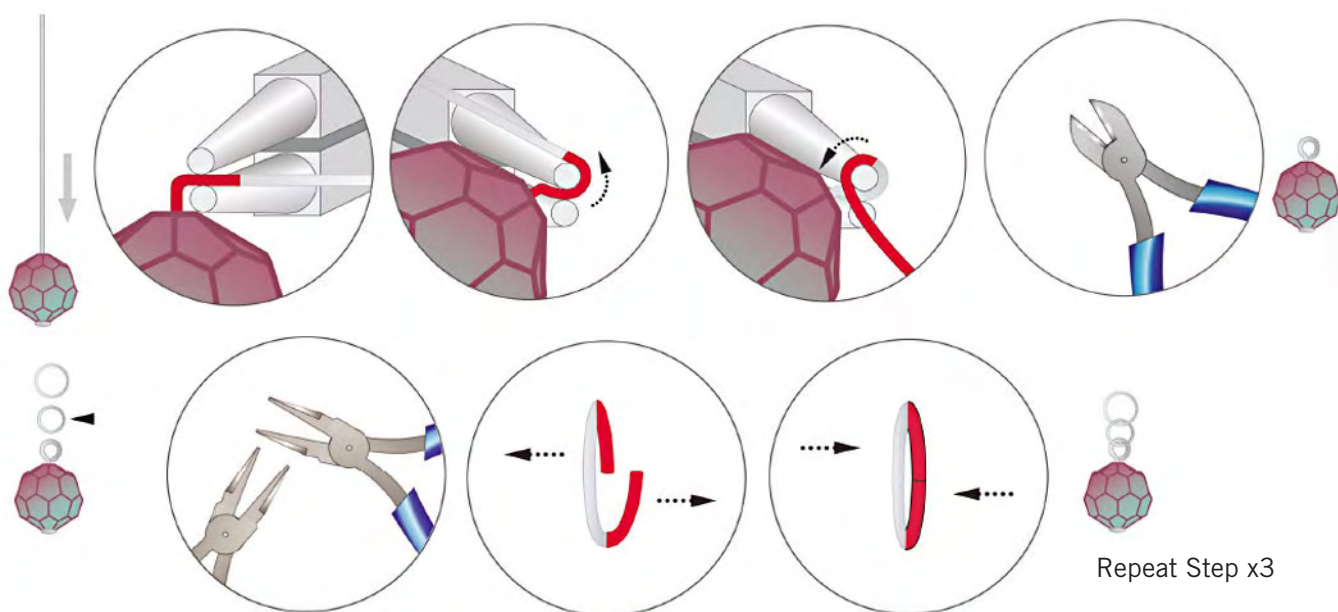
**STEP 4:** Use a 35cm piece of tiger tail and slide on a crimping tube, insert the tiger tail first through the split ring and then back through the crimping tube as shown. Crimp the crimping tube and cut off the leftover tiger tail.



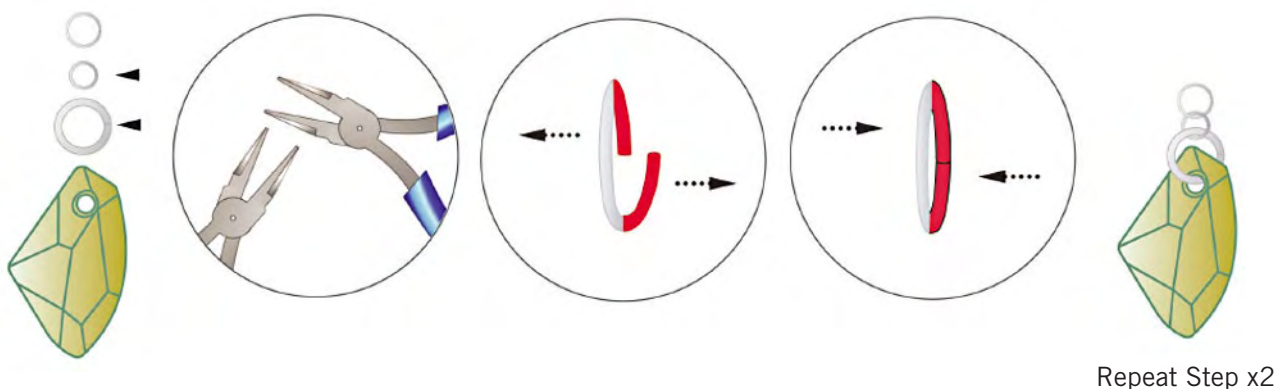
**STEP 5:** Slide on one SWAROVSKI ELEMENTS Bead art. 5000 Fern Green Topaz Blend and one external element onto the tiger tail alternating between the two until the strand is complete. Attach the other end of the tiger tail to the split ring by repeating step 4 as shown.



**STEP 6:** Slide a SWAROVSKI ELEMENTS Bead art. 5000, 10mm Burgundy Blue Zircon onto a head pin and form the other end to a loop. Attach one 8mm, 4mm and 5mm jump ring into the loop as shown in the illustrations. Repeat this step 3 more times.

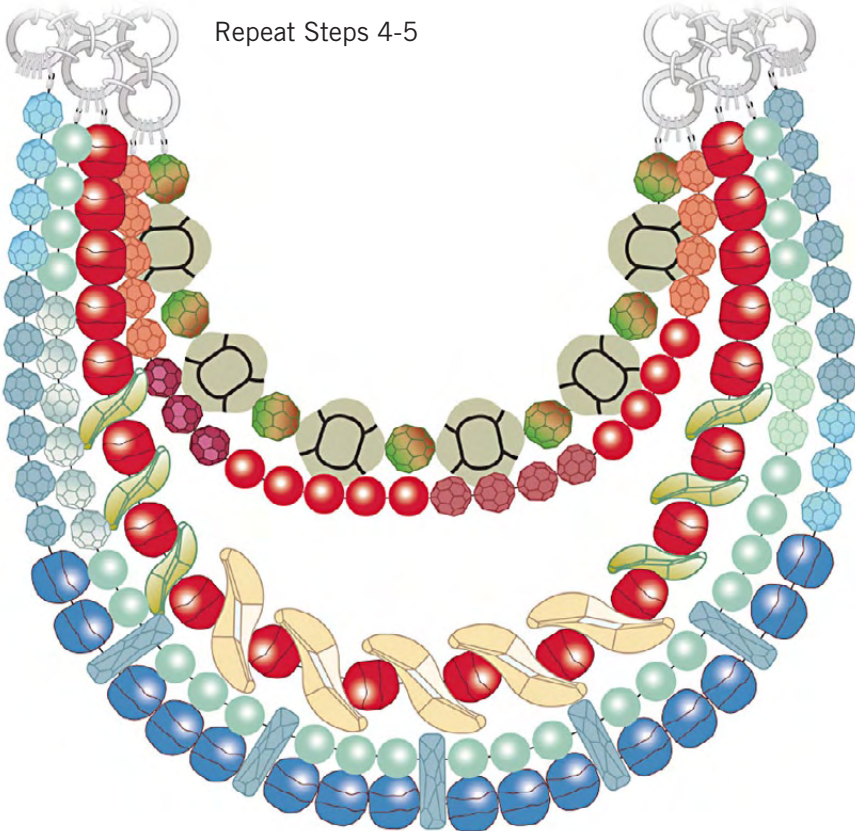


**STEP 7:** Attach an 8mm jump ring to a SWAROVSKI ELEMENTS Pendant art. 6656. Hang a 6mm split ring using a 4mm jump ring onto it and repeat the entire step three more times.





STEP 8: Repeat steps 4 – 5 to attach all the beaded strands onto the left and right end of the chainmail.



STEP 9

