

CREATE
YOUR STYLE
with SWAROVSKI ELEMENTS



DESIGN PROJECT
VALENTINE'S DAY
EARRINGS
"LOVE LETTER" & "HEART"

VALENTINE'S DAY EARRINGS "LOVE LETTER" & "HEART"



SWAROVSKI ELEMENTS

Supplies & Tools

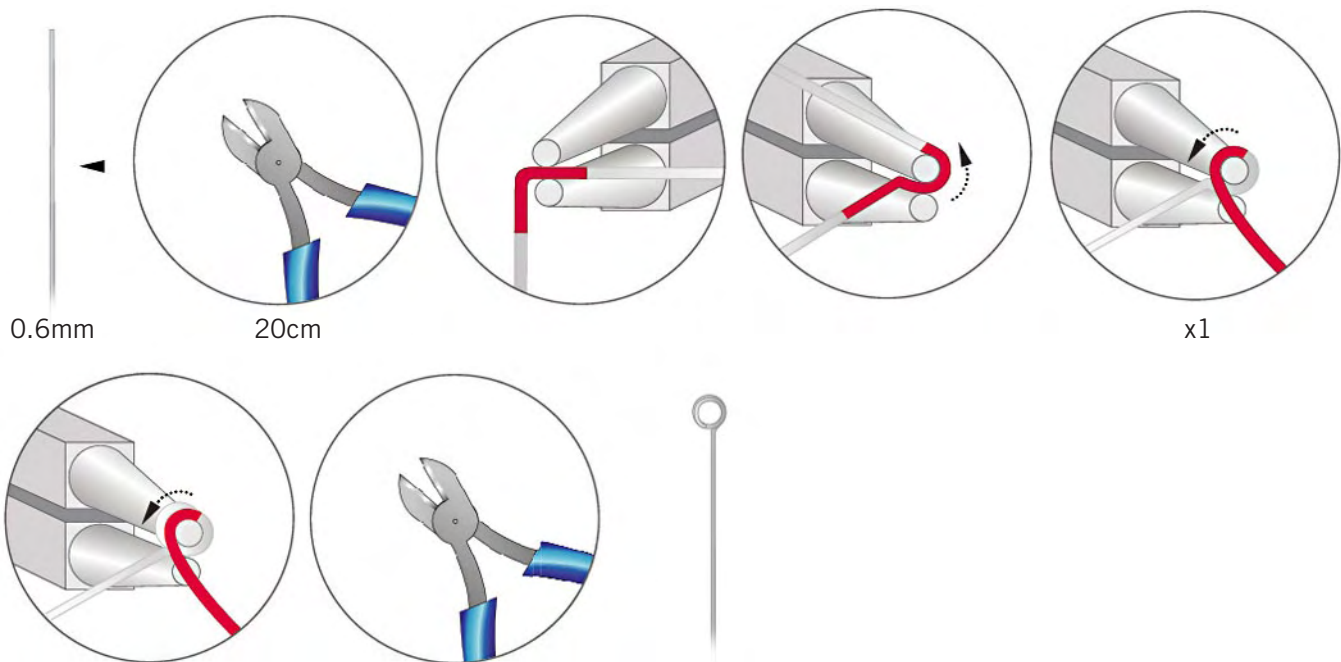
| Article | Product Group | Article No. | Amount | Size | Color | Color Code |
|---------|---------------|-------------|---------|------|----------------------|------------|
| | Beads | 5328 | 98 pcs. | 3mm | Fuchsia | 502 |
| | Beads | 5328 | 1 pc. | 14mm | Crystal Silver Shade | 001 SSHA |
| | Beads | 5328 | 1 pc. | 14mm | Crystal Silver Shade | 001 SSHA |

Supplies
 Silver Chain, 5.5cm
 2x Silver French Ear Wire
 2x Silver Jump Rings, 4mm
 40cm Silver Wire, .6cm

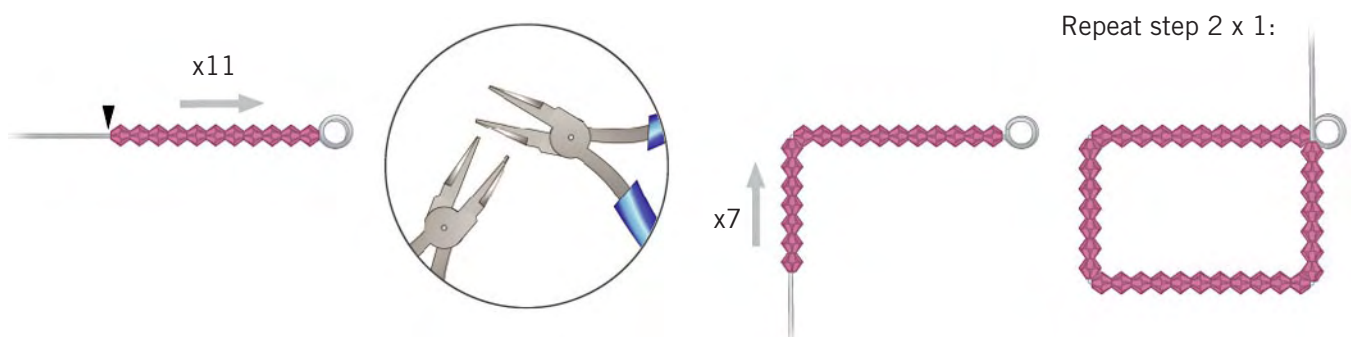
Tools
 Flat Nose Pliers
 Round Nose Pliers
 Side Cutter

Version A "Love Letter"

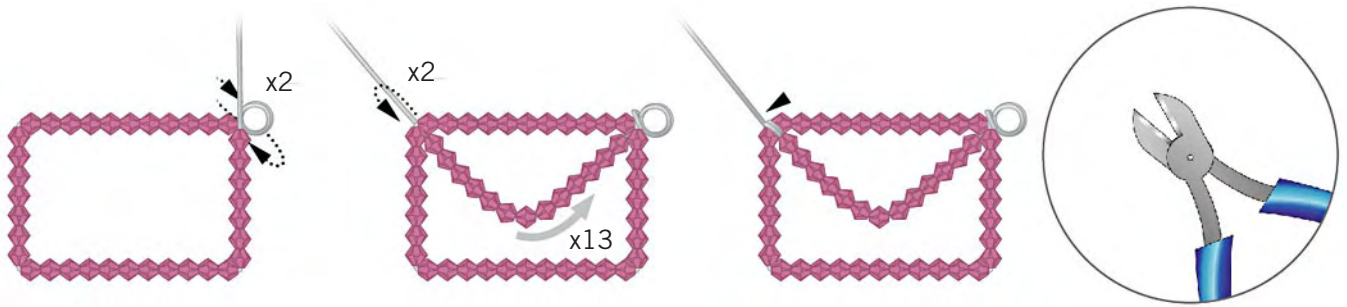
STEP 1: Cut 20cm of 0.6mm wire. Make a double loop at one end of the wire using round nose pliers and cut off the excess wire.



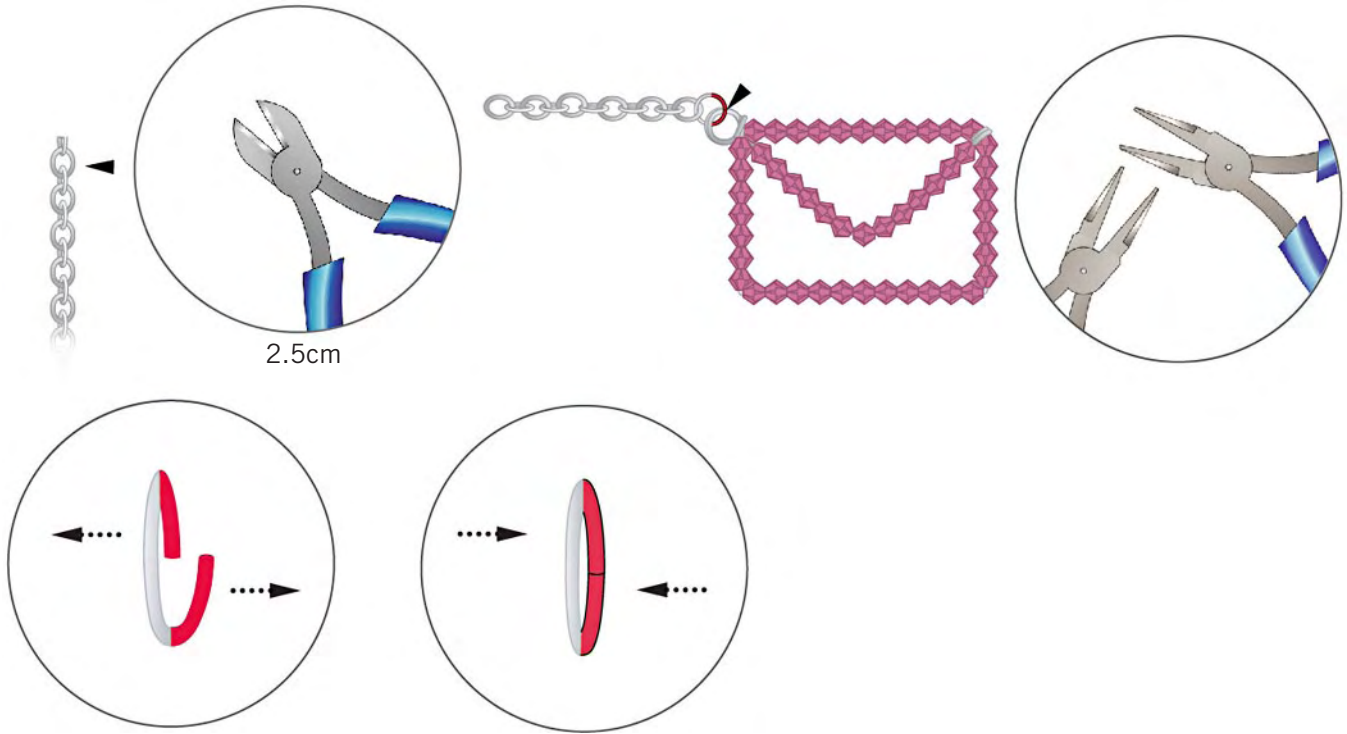
STEP 2: String eleven SWAROVSKI ELEMENTS XILION Beads art. 5328, 3mm onto the wire. Bend the wire to a form a right angle then string on 7 more XILION Beads. Repeat this step 2 more times to form a rectangle as shown.



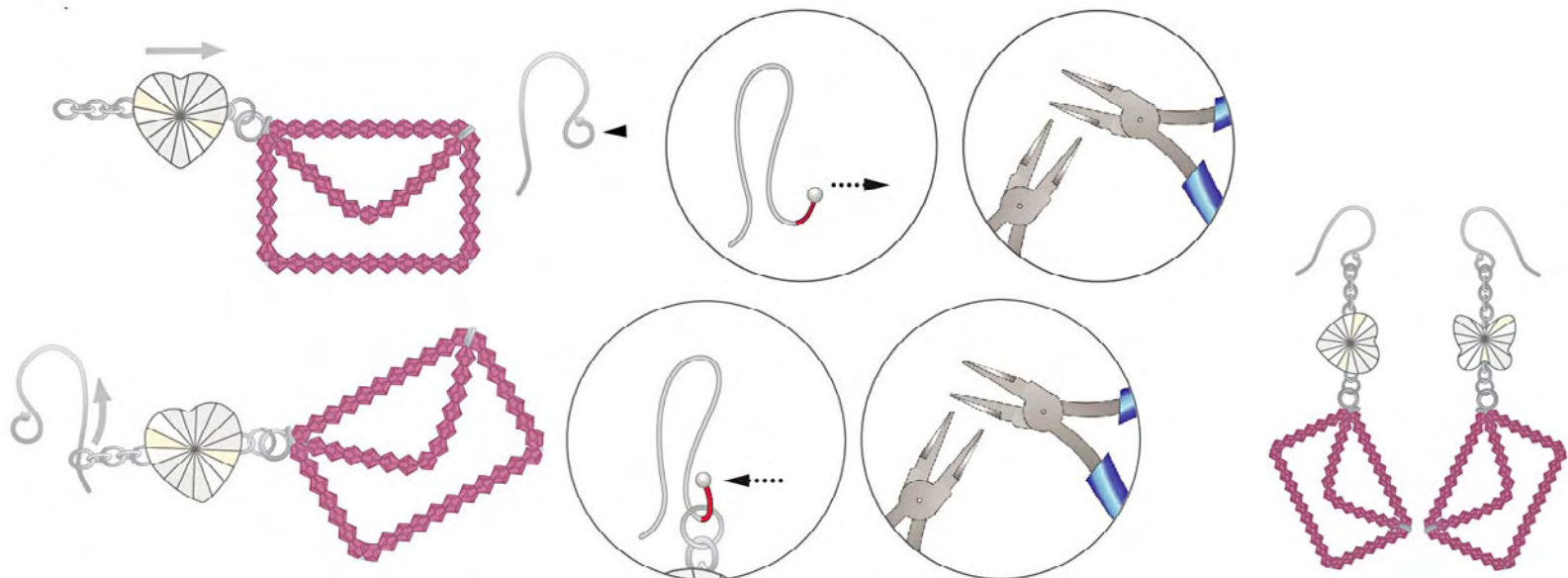
STEP 3: Wind the wire around the loop twice, bend to form the shape as shown in the illustration and string on thirteen 5328 XILION Beads. Wind the wire around the edge in between the 11th and the 12th Bead twice and cut off the remaining wire.



STEP 4: Cut a 2.5cm piece of chain and attach it to the loop of the beaded "letter" using a 4mm jump ring.



STEP 5: Thread the SWAROVSKI ELEMENTS Heart Bead, art. 5942 through the chain as shown. Open the loop on the French ear wire using flat nose pliers and insert it through the chain. Close the loop. Repeat steps 1 – 5 to create the other earring, but use the SWAROVSKI ELEMENTS Butterfly Bead, art. 5954 instead of the Heart Bead.



VALENTINE'S DAY EARRINGS "LOVE LETTER" & "HEART"



SWAROVSKI ELEMENTS

| Article | Product Group | Article No. | Amount | Size | Color | Color Code |
|---------|---------------|-------------|---------|------|----------------------|------------|
| | Beads | 5328 | 98 pcs. | 3mm | Fuchsia | 502 |
| | Beads | 5328 | 1 pc. | 14mm | Crystal Silver Shade | 001 SSHA |
| | Beads | 5328 | 1 pc. | 14mm | Crystal Silver Shade | 001 SSHA |

Supplies & Tools

Supplies
 Silver Chain, 5.5cm
 2x Silver French Ear Wire
 2x Silver Jump Rings, 4mm
 40cm Silver Wire, .6cm

Tools
 Flat Nose Pliers
 Round Nose Pliers
 Side Cutter

Version B "Heart"

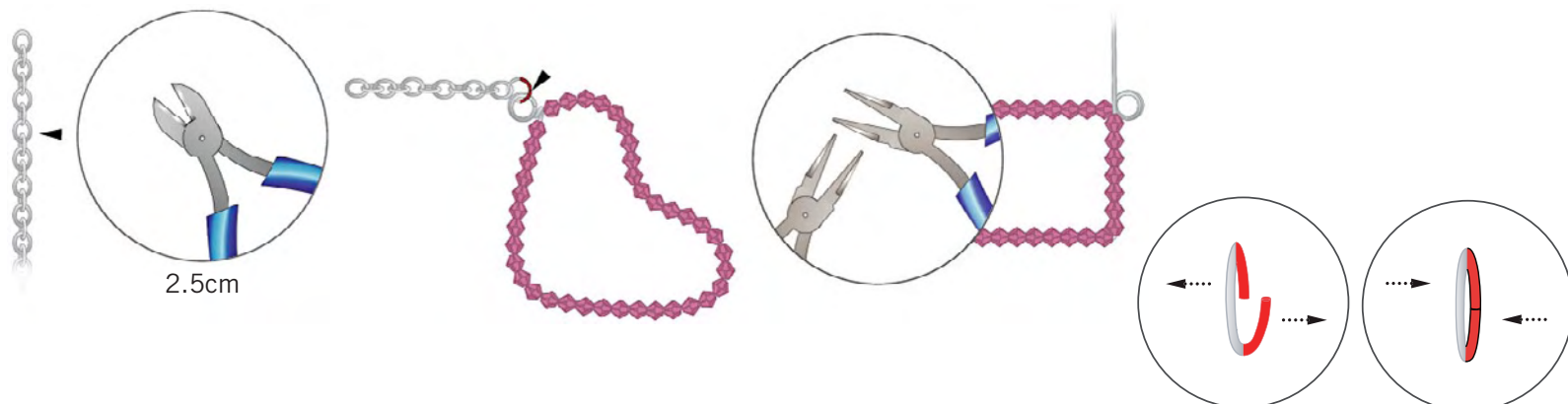
STEP 6: Repeat step 1 to get a wire with a double loop at one end, then thread 39 SWAROVSKI ELEMENTS XILION Beads art. 5328, 3mm Fuchsia onto it.



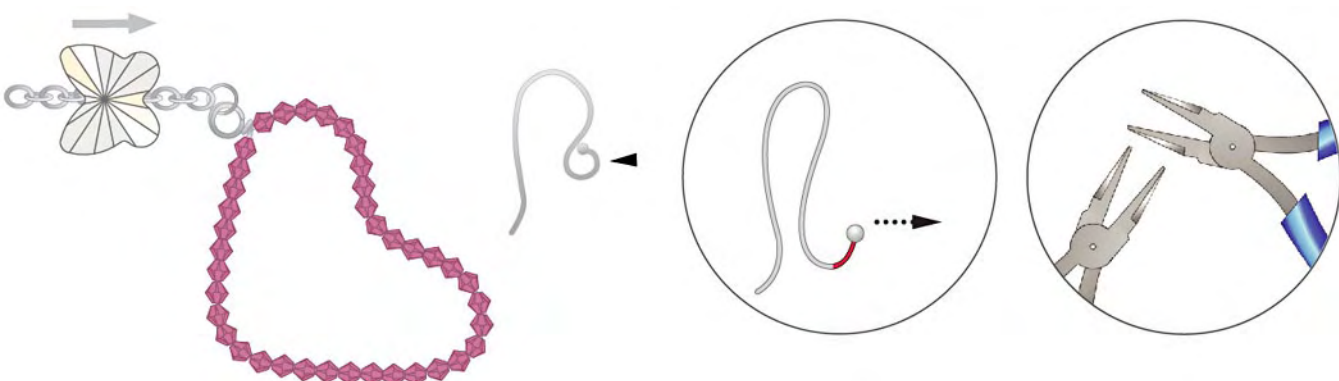
STEP 7: With the help of a pen, shape the wire to form a heart as shown. Twist the wire around the loop and cut off the remaining wire.



STEP 8: Cut a 2.5cm chain and attach it the loop of the heart using a 4mm jump ring and flat nose pliers.



STEP 9: Insert the SWAROVSKI ELEMENTS Butterfly Bead, art. 5954 onto the chain and open the loop on the French ear wire.



STEP 10: Insert the French ear wire onto the chain and close the loop. Repeat steps 1 – 5 to create a letter shaped earring.

