

CREATE  
YOUR STYLE  
with SWAROVSKI ELEMENTS

DESIGN PROJECT  
HALLOWEEN  
**NECKLACE**  
"SPIDER'S WEB"



# HALLOWEEN NACKLACE "SPIDER'S WEB"



## SWAROVSKI ELEMENTS

Article	Product Group	Article No.	Amount	Size	Color	Color Code
	Beads	5000	1 pc.	8 mm	Black Diamond	215
	Beads	5328	24 pcs.	4 mm	Fern Green	291
	Beads	5328	45 pcs.	4 mm	Jet	280
	Beads	5523	1 pc.	16 mm	Jet	280

## Supplies & Tools

### Supplies

Chain, gun, 120 cm  
9 x Eye pins, gun  
7 x Head pins, gun  
1 x Lobster clasp, gun  
1 x Jump ring, Ø 7 mm  
24 x Jump ring, Ø 4 mm  
Ribbon scoubidou tube,  
Ø 2 mm black, 20 cm

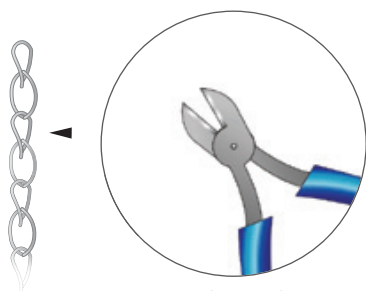
### Tools

Flat nose pliers  
Round nose pliers  
Scissors  
Side cutter

Level of design: INTERMEDIATE

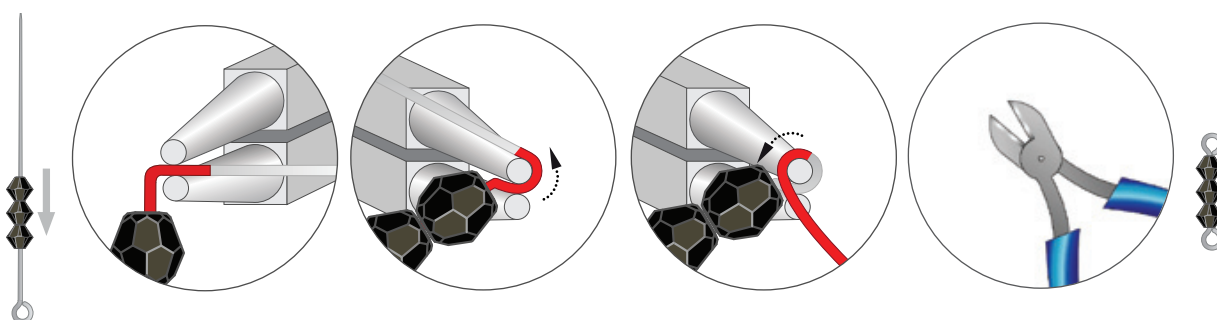
Have also a look at the **text instruction** at the last page!

## STEP 1

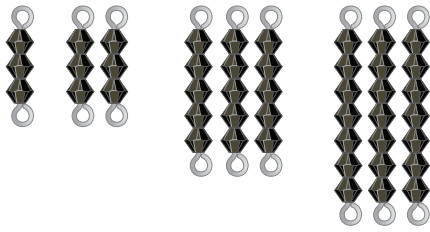


52 cm x1  
16 cm x1  
16.5 cm x2  
17 cm x1

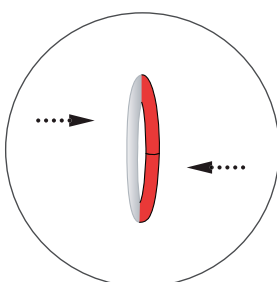
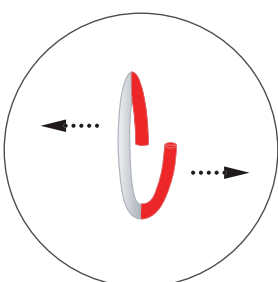
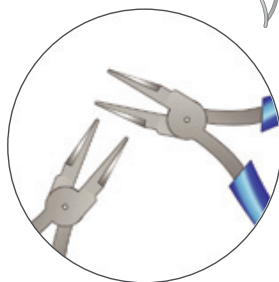
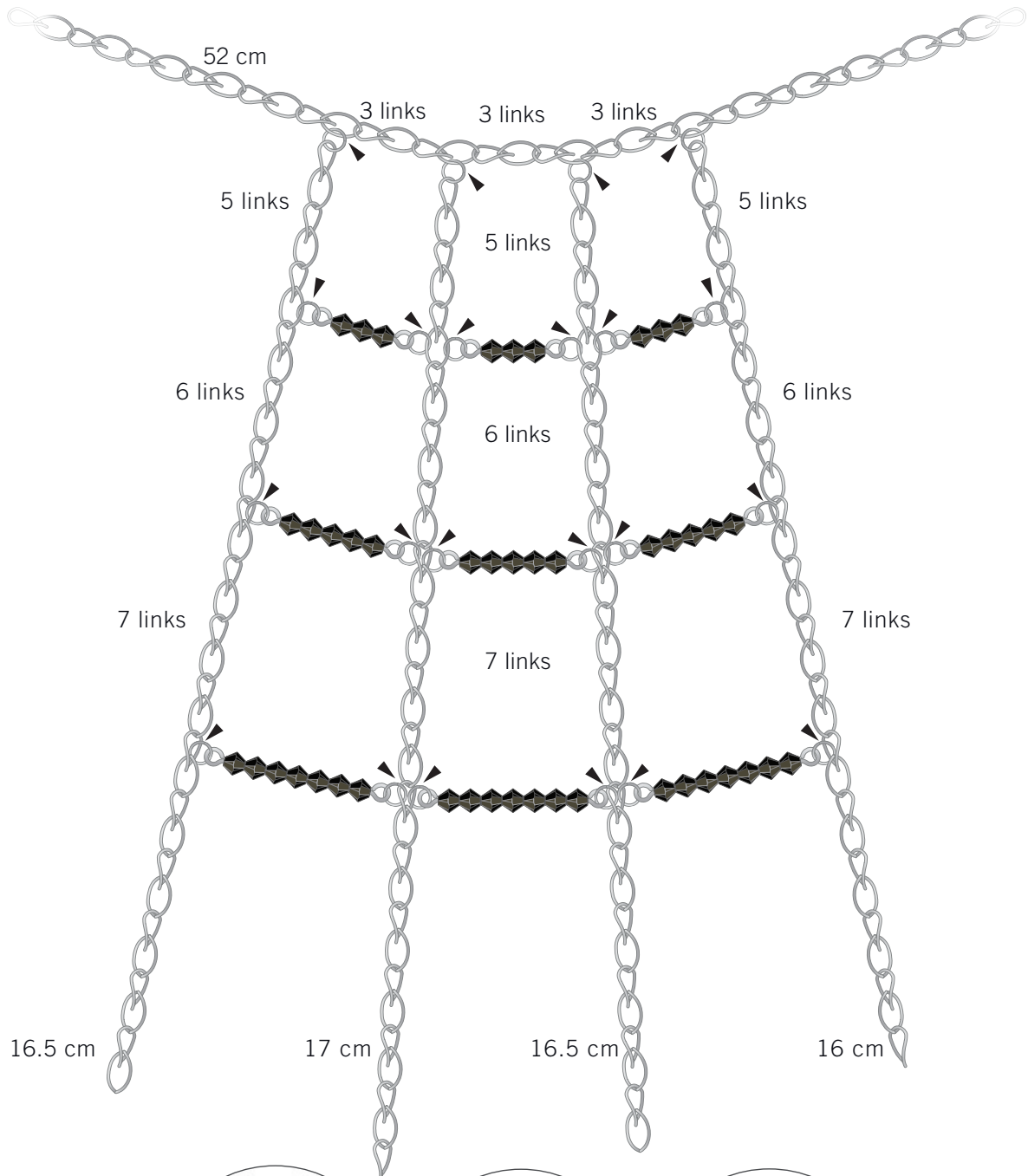
## STEP 2



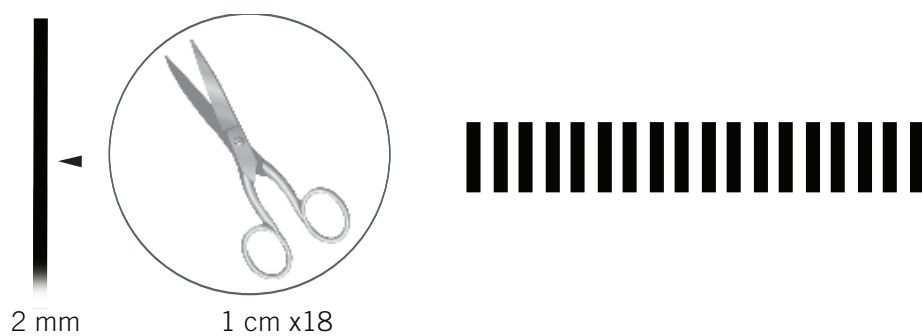
Repeat step x8



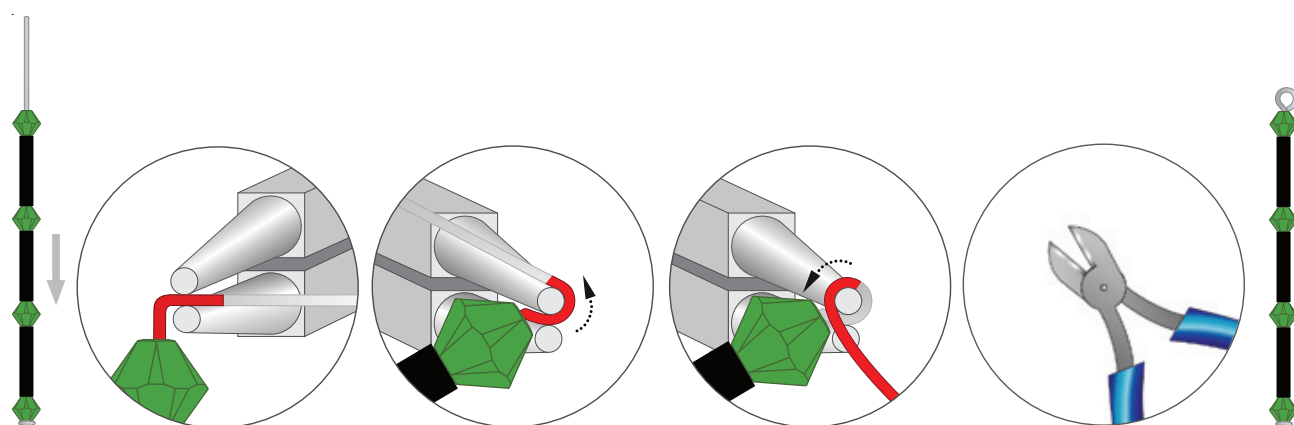
### STEP 3



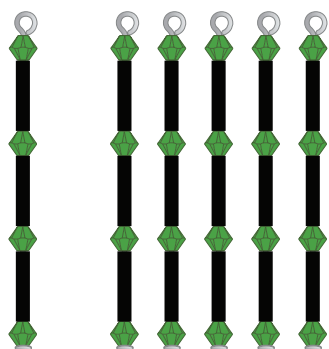
## STEP 4



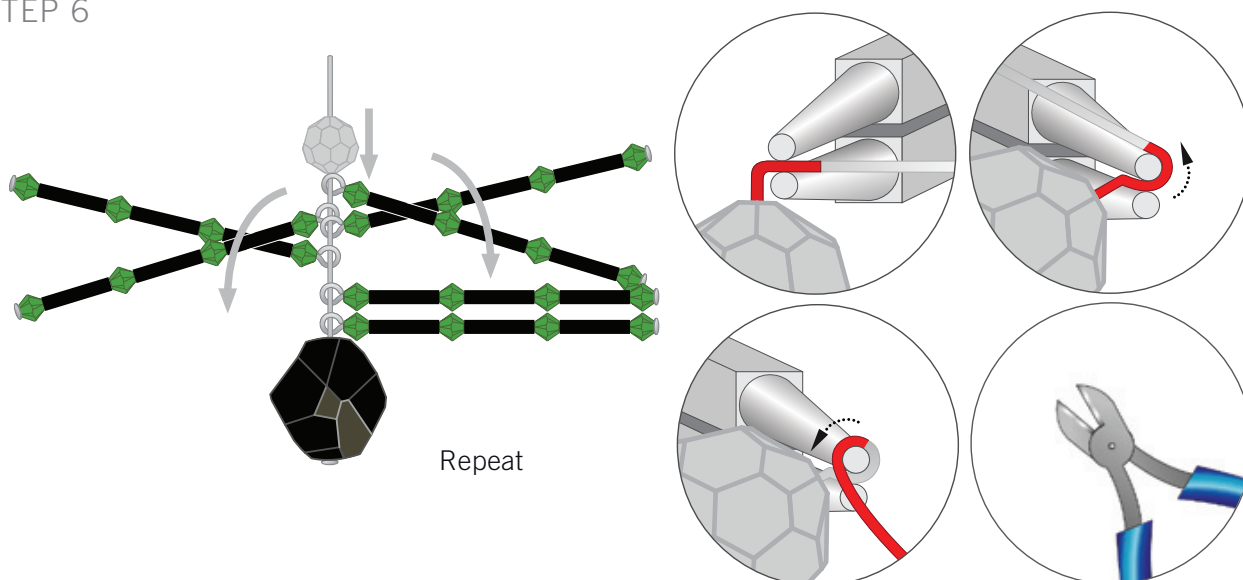
## STEP 5



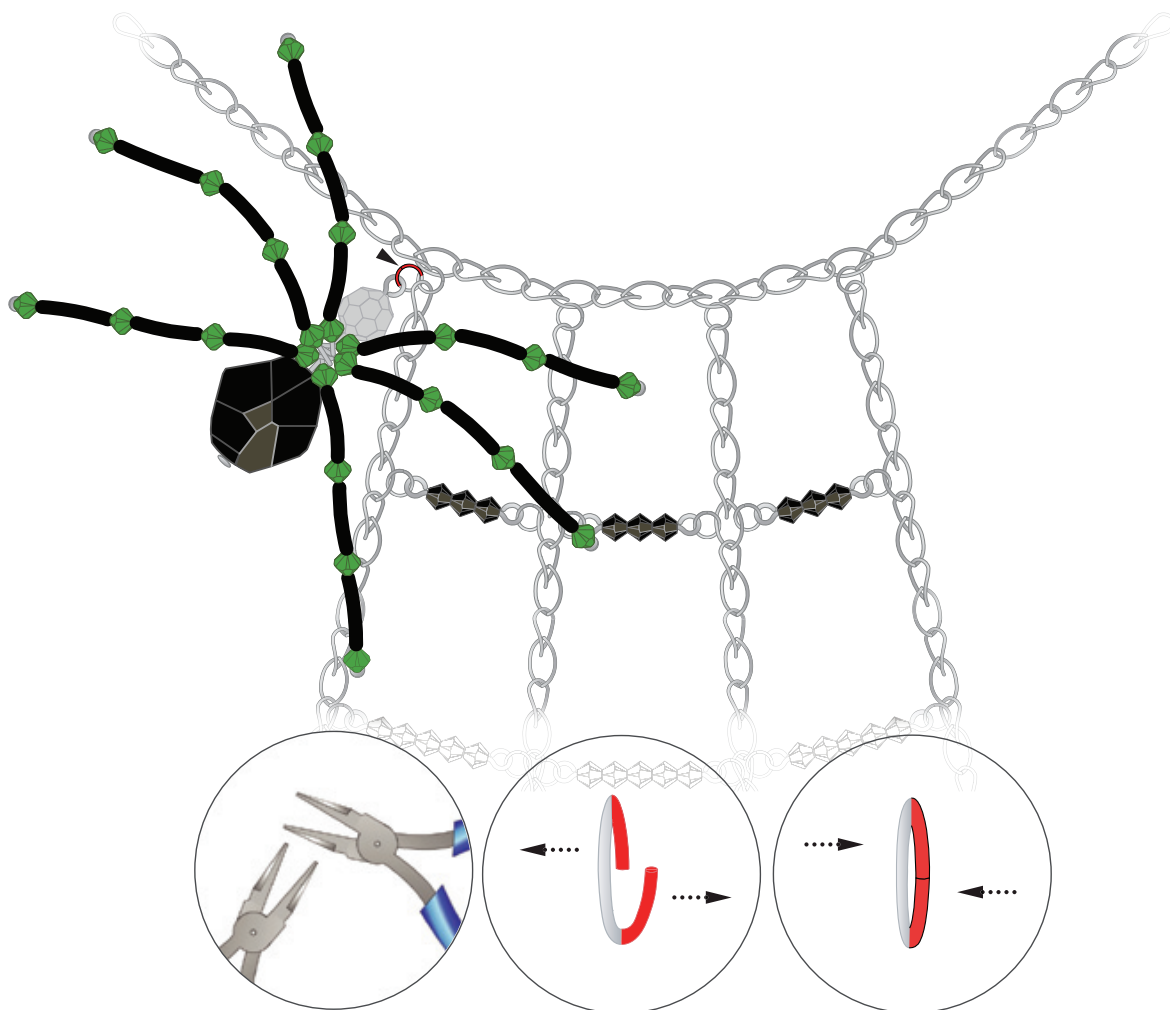
Repeat step x5:



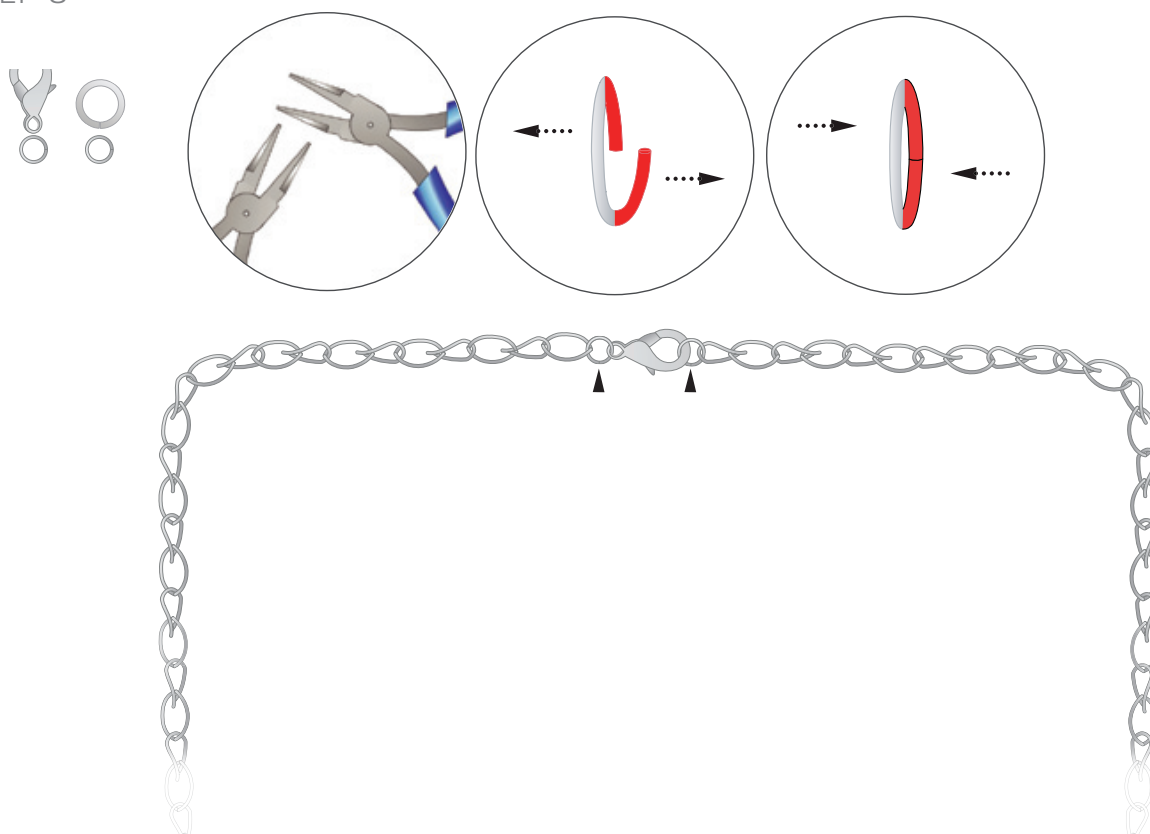
## STEP 6



## STEP 7



## STEP 8







Scale 1:2

# HALLOWEEN NECKLACE

## “SPIDER’S WEB”



- STEP 1: Cut two 16.5cm chains and one each of the following lengths: 52cm, 16cm and 17cm.
- STEP 2: Slide on three Swarovski Beads article 5328 4mm Jet on an eye pin and turn the end to form a loop. Repeat this step 8 more times.
- STEP 3: Attach the chains and the beaded eye pins together using 4mm jump rings as shown in the illustrations.
- STEP 4: Cut eighteen 1cm pieces of 2mm black tubing.
- STEP 5: Slide one Swarovski Bead article 5328 4mm Fern Green onto a headpin then one piece of 1cm black tubing. Repeat two more times and end with one 4mm Fern Green bead. Turn a loop on the end of the headpin. Repeat this step 5 more times.
- STEP 6: Insert one Swarovski Bead article 5523 16mm Jet onto a headpin. Add all the head pins with Beads and black tubing and add one Swarovski Bead article 5000 8mm Black Diamond. Turn a loop on the end as shown and bend headpins with beads and tubing so they appear like the legs of a spider.
- STEP 7: Attach the spider to the chain using a 4mm jump ring.
- STEP 8: Attach a lobster clasp to one end of the chain using a 4mm jump ring and attach a 7mm jump ring to the other end of the chain.