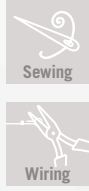


CREATE
YOUR STYLE
with SWAROVSKI ELEMENTS

DESIGN PROJECT
SUMMER HOLIDAYS
KEY PENDANT



SUMMER HOLIDAYS KEY PENDANT



SWAROVSKI ELEMENTS

Article	Product Group	Article No.	Amount	Size	Color	Color Code
	Fancy Stones	4137	1 pc.	33x24 mm	Crystal Silver Shade	001 SSHA
	Beads	5000	2 pcs.	8 mm	Air Blue Opal	285
	Crystal Pearls	5810	1 pc.	12mm	Crystal Platinum Pearl	001 459

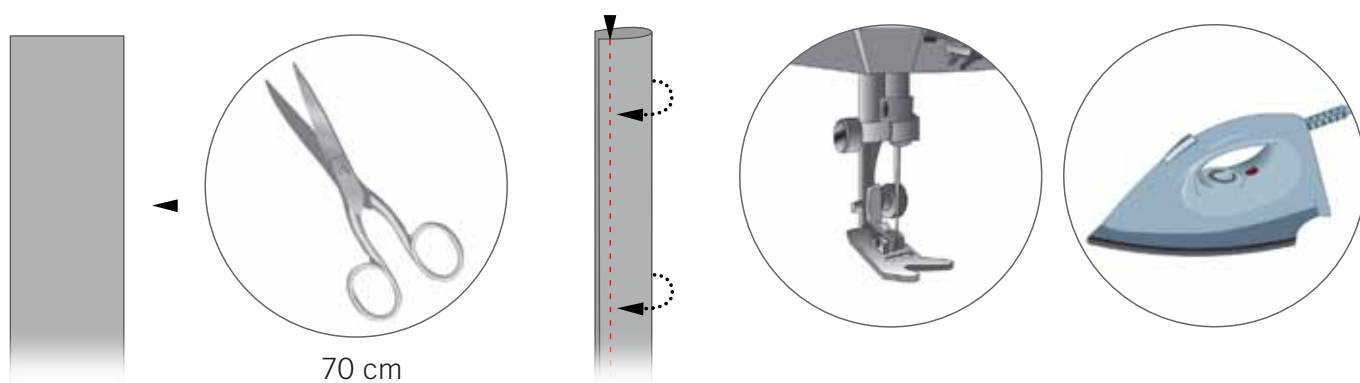
Supplies & Tools

- Supplies**
- 1 x Jump ring, 18mm, silver,
 - Nylon thread, 0.15mm, transparent, 2m
 - Ribbon cotton, 1.5m, grey, 70cm
 - Sewing thread, grey, 1 spool
 - 1 x Split ring, 30mm, silver,
- Tools**
- Clothes pin
 - Flat iron
 - Glue
 - Needle
 - Scissors
 - Sewing machine
 - Tooth picks

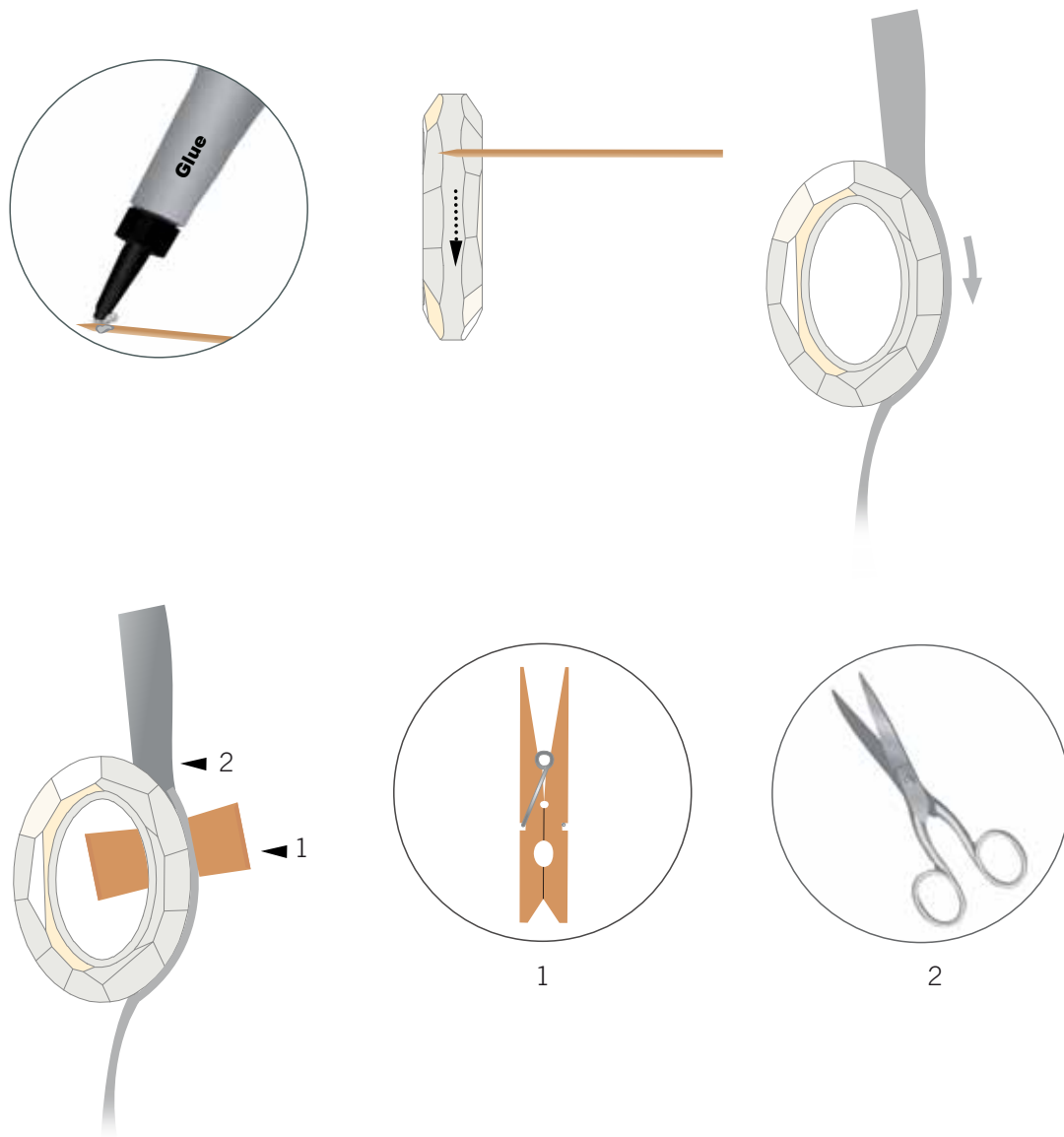
Level of design: INTERMEDIATE

Have also a look at the **text instruction** at the last page!

STEP 1



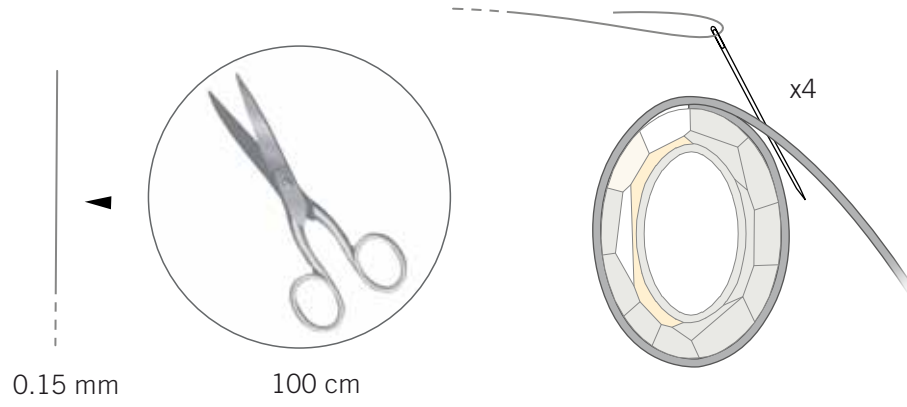
STEP 2



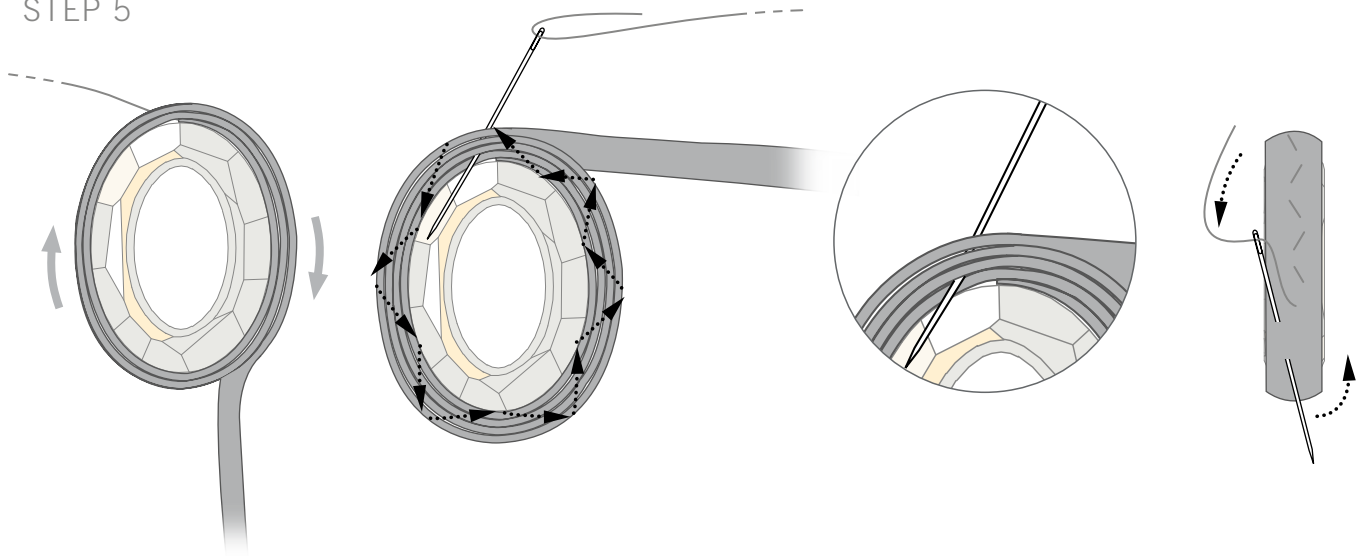
STEP 3



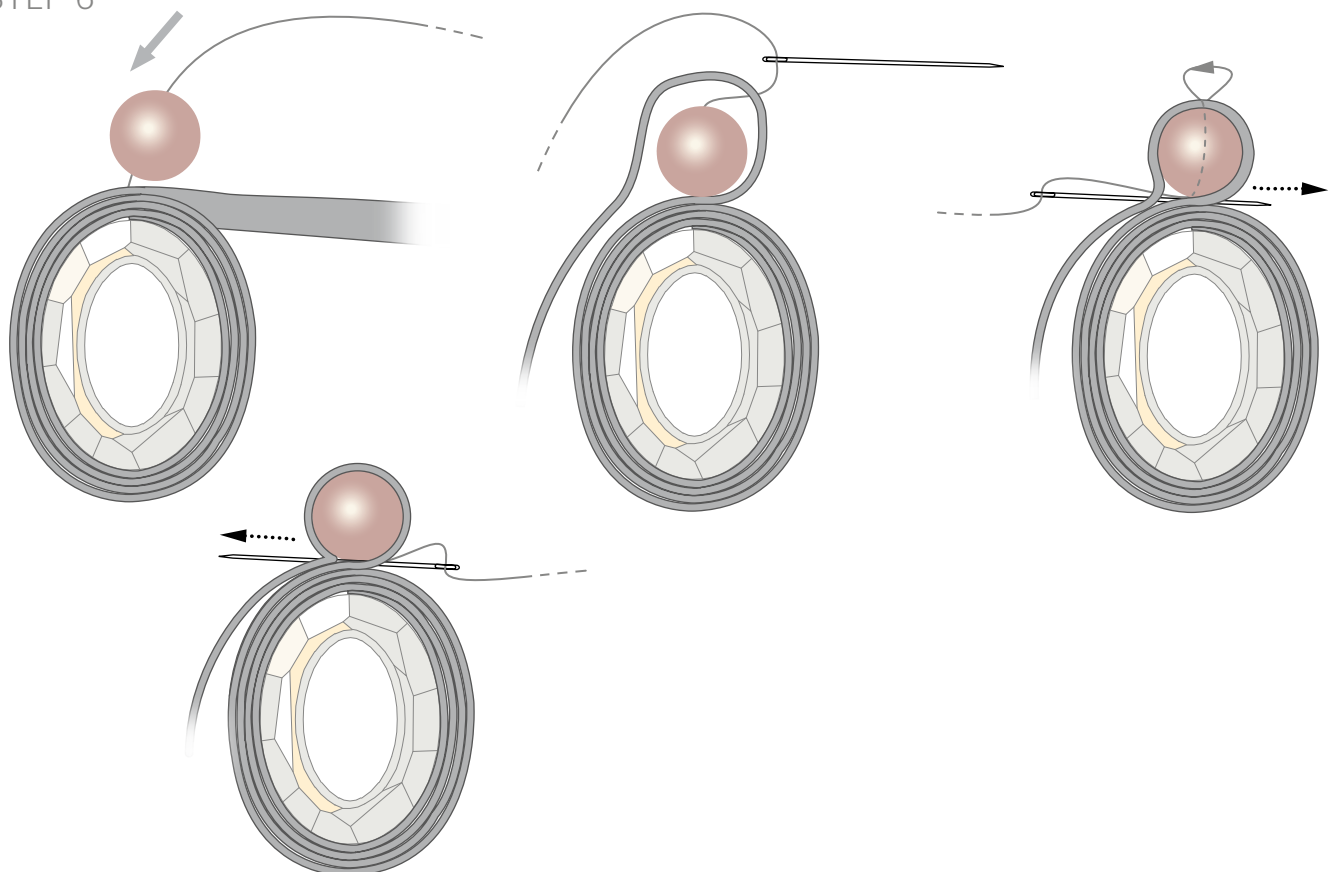
STEP 4



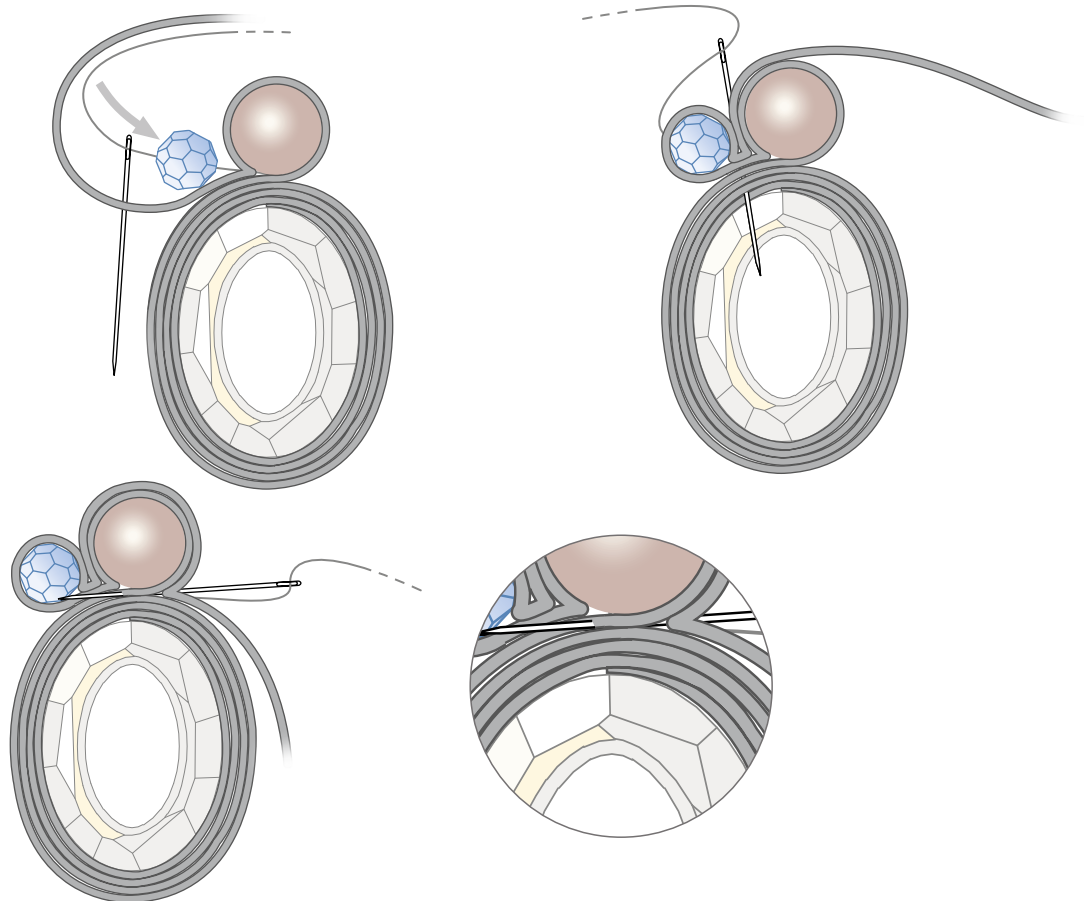
STEP 5



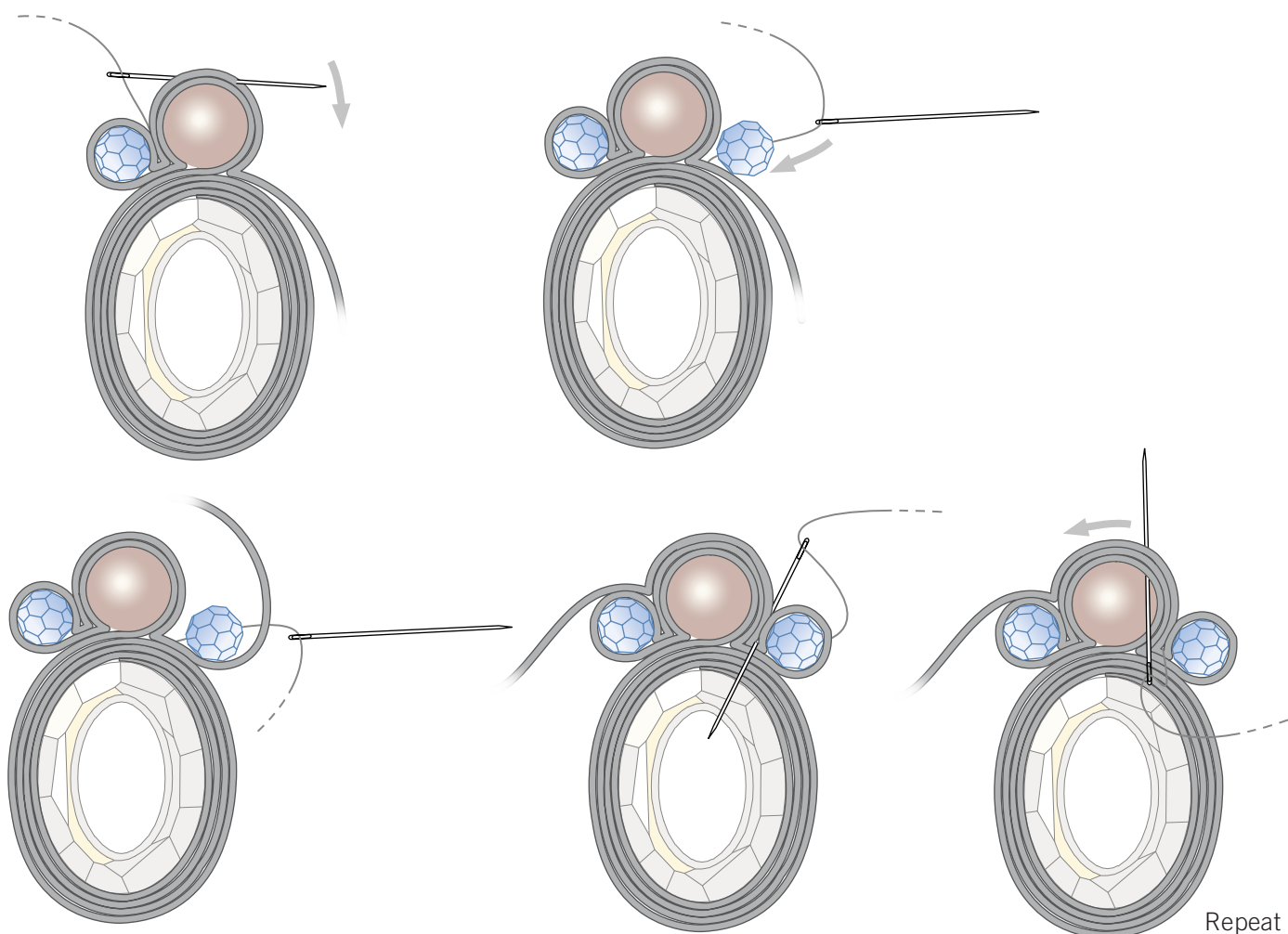
STEP 6



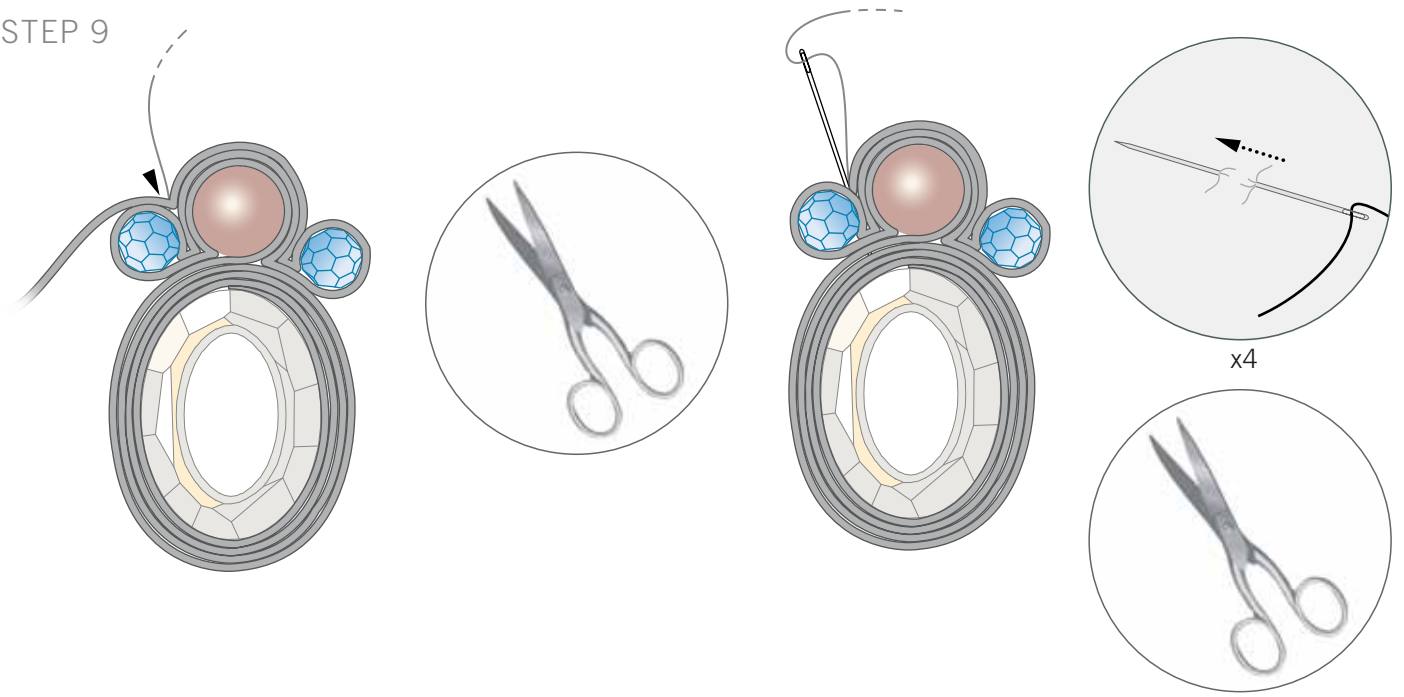
STEP 7



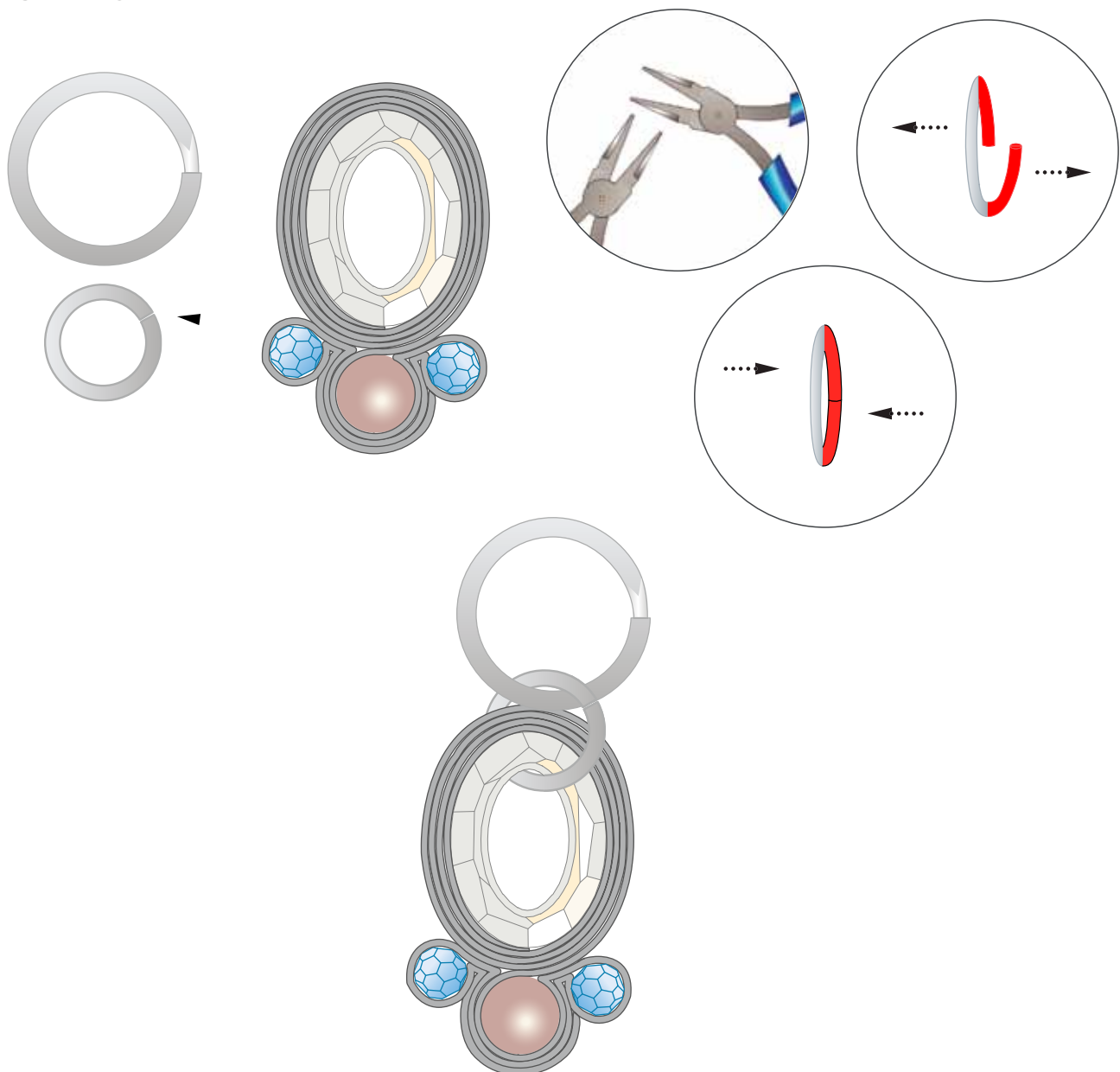
STEP 8



STEP 9



STEP 10



CREATE YOUR STYLE with SWAROVSKI ELEMENTS Design Project

Summer Holidays Key Pendant

- STEP 1: Cut 70cm of ribbon. Fold it into half and then sew it with a sewing machine and iron it.
- STEP 2: Start gluing the ribbon from one side of the Swarovski Fancy Stone article 4137 33x24mm Crystal Silver Shade as shown in the illustration, hold in place with a clothes pin. Cut any extra length of ribbon at the top as marked number 2 in the illustration.
- STEP 3: Glue the ribbon onto the other half of the Swarovski Fancy Stone and fix it again with the clothes pin.
- STEP 4: Cut 100cm of 0.15mm nylon thread. Sew the two layers of ribbon together with approximately 4 stitches.
- STEP 5: Pull the ribbon tightly and wind it around the Swarovski Fancy Stone three times. Sew all three layers of ribbon in exactly the same manner as done in the illustration to ensure that it's fixed properly around the stone.
- STEP 6: Slide the Crystal Pearl article 5810 12mm (Crystal Platinum Pearl) onto the needle and thread and sew it in the middle of the charm. Pull the ribbon over this Crystal Pearl and fix it in place with the thread as shown in the illustrations.
- STEP 7: Slide on the Swarovski Bead article 5000 8mm Air Blue Opal onto the needle and thread and again pull the ribbon over this bead and fix it as depicted in the illustrations. Pull the ribbon over the Crystal Pearl (Crystal Platinum Pearl) and fix it as shown in the third picture in this step.
- STEP 8: Slide the other Swarovski Bead article 5000 8mm Air Blue Opal onto the needle and thread. Pull the ribbon over the Swarovski Bead and fix it as shown in the pictures and then back over the Crystal Pearl and fix it here again.
- STEP 9: Cut off any remaining ribbon. Fix it in between the bead and pearl and sew it over with 4 back stitches. Cut off thread.
- STEP 10: Open the 18mm jump ring and hang it into the 30mm split ring and the charm as seen in the illustrations & close the jump ring.