

CREATE
YOUR STYLE
with SWAROVSKI ELEMENTS



DESIGN PROJECT

VALENTINE'S DAY
NECKLACE

“KEY TO MY HEART”

VALENTINE'S DAY NECKLACE "KEY TO MY HEART"



SWAROVSKI ELEMENTS

Article	Product Group	Article No.	Amount	Size	Color	Color Code
	Flat Backs No Hotfix	2028	60 pcs.	SS 5	Fuchsia F	502
	Beads	5621	1 pc.	14 mm	Crystal Print	001 Paisley Print
	Pendants	6228	1 pc.	14.4x14 mm	Sunflower	292
	Pendants	6228	1 pc.	18x17.5 mm	Crystal Silver Night	001 SINI

Supplies & Tools

Supplies

- Chain, silver, 80cm
- 8x Jump ring, silver, 4 mm
- 3x Jump ring, silver, 5 mm
- 2x Jump ring, silver, 6 mm
- 1x Key, silver
- Lobster, silver
- Wire, silver, Ø 0.8mm, 20cm

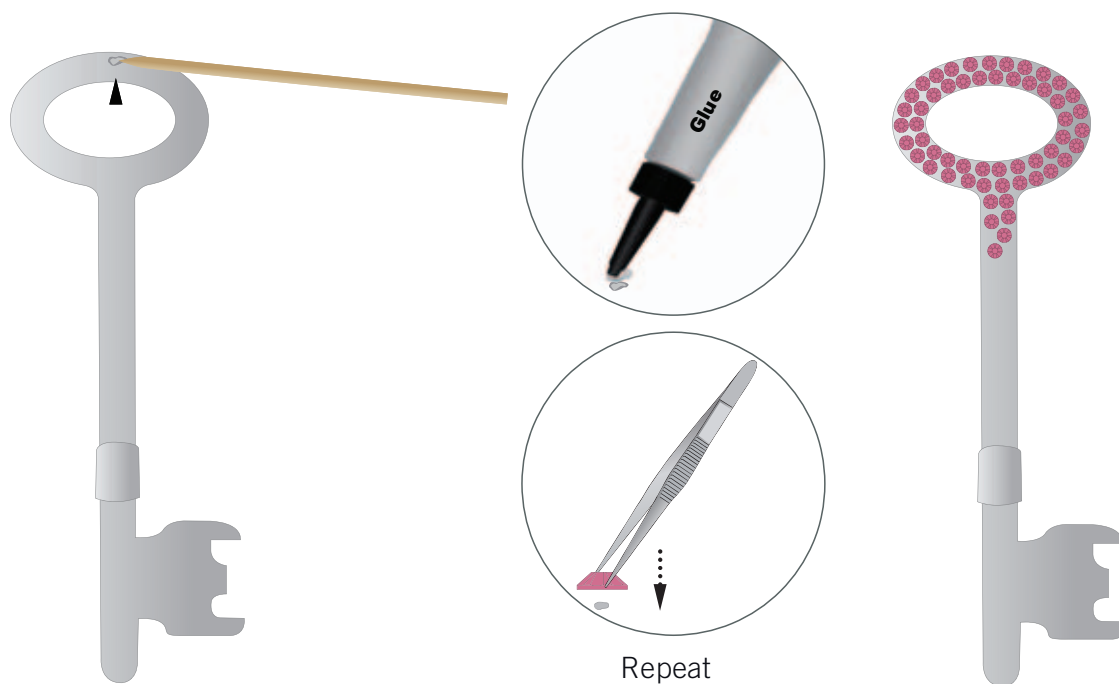
Tools

- Flat nose pliers
- Glue
- Pencil
- Round nose pliers
- Side cutter
- Tooth pick
- Tweezers

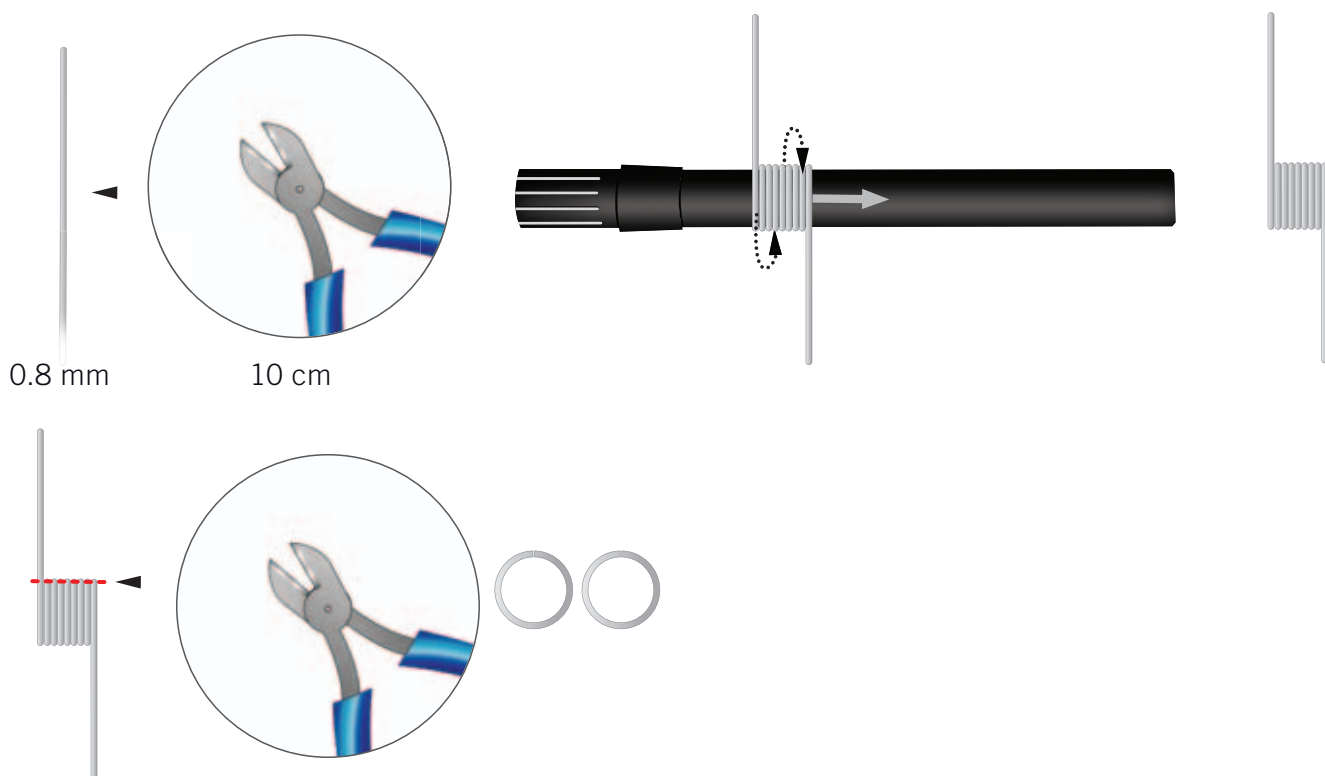
Level of design: BEGINNER

Have also a look at the **text instruction** at the last page!

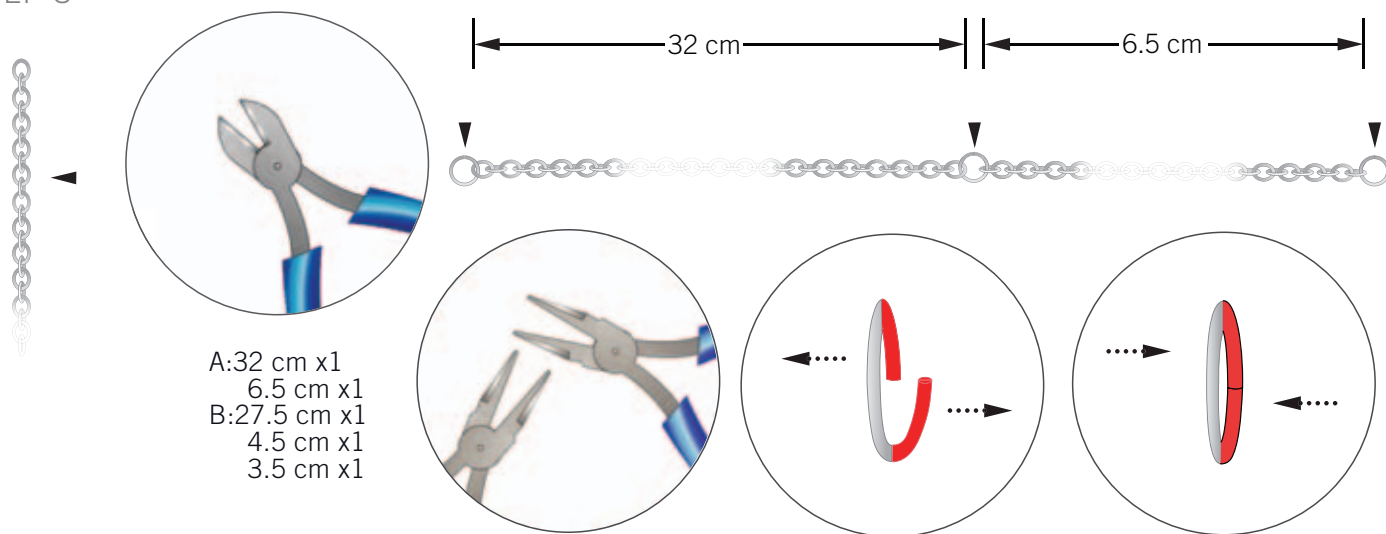
STEP 1



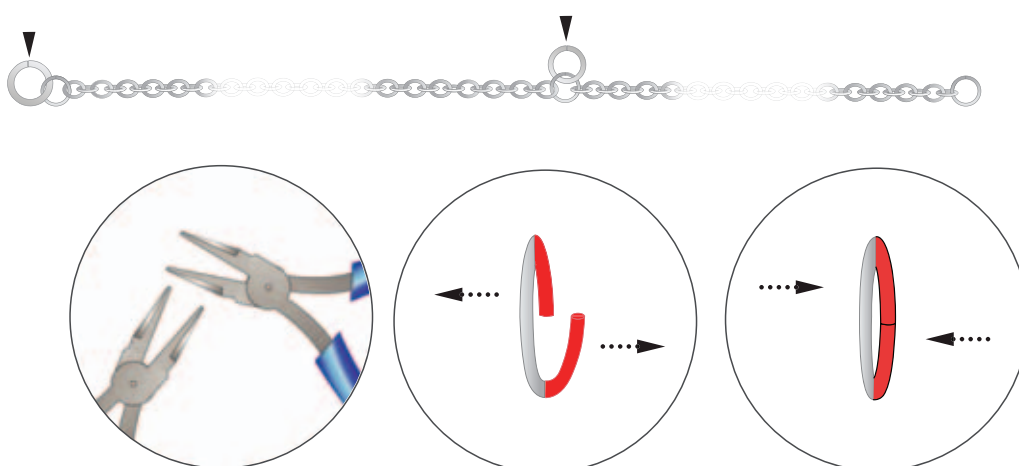
STEP 2



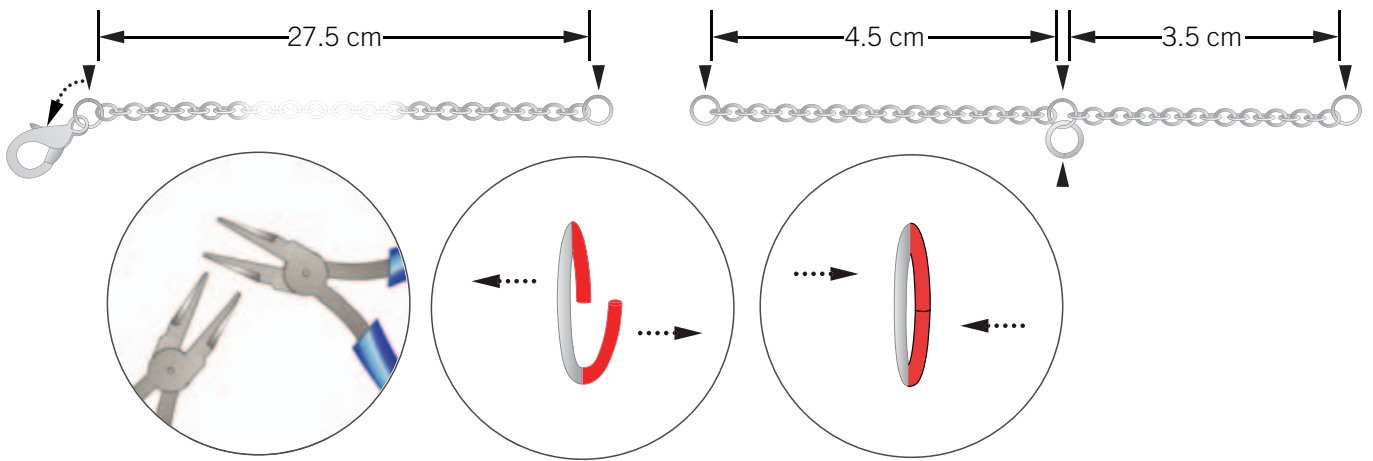
STEP 3



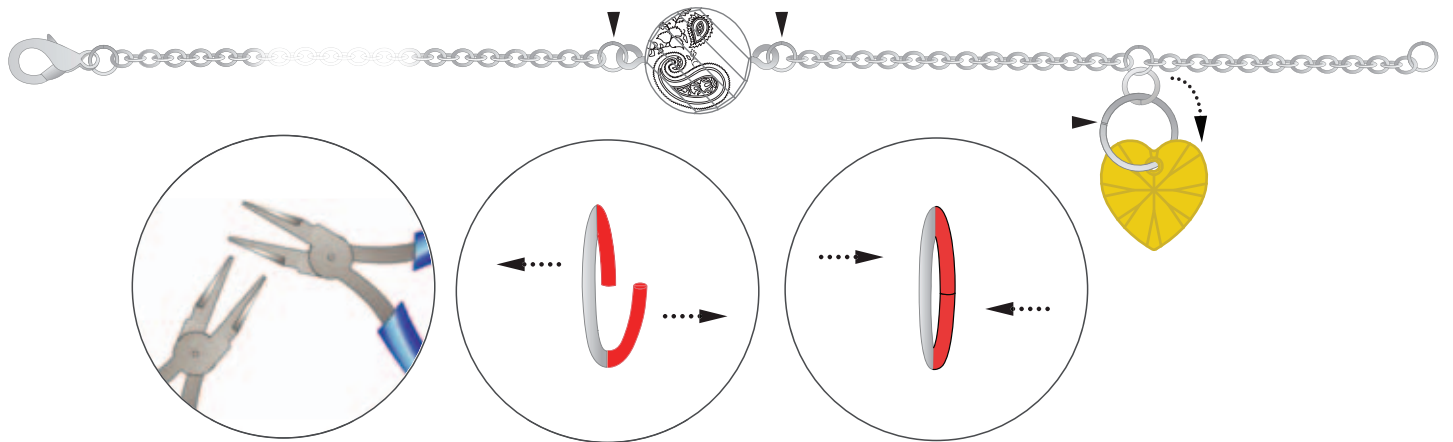
STEP 4



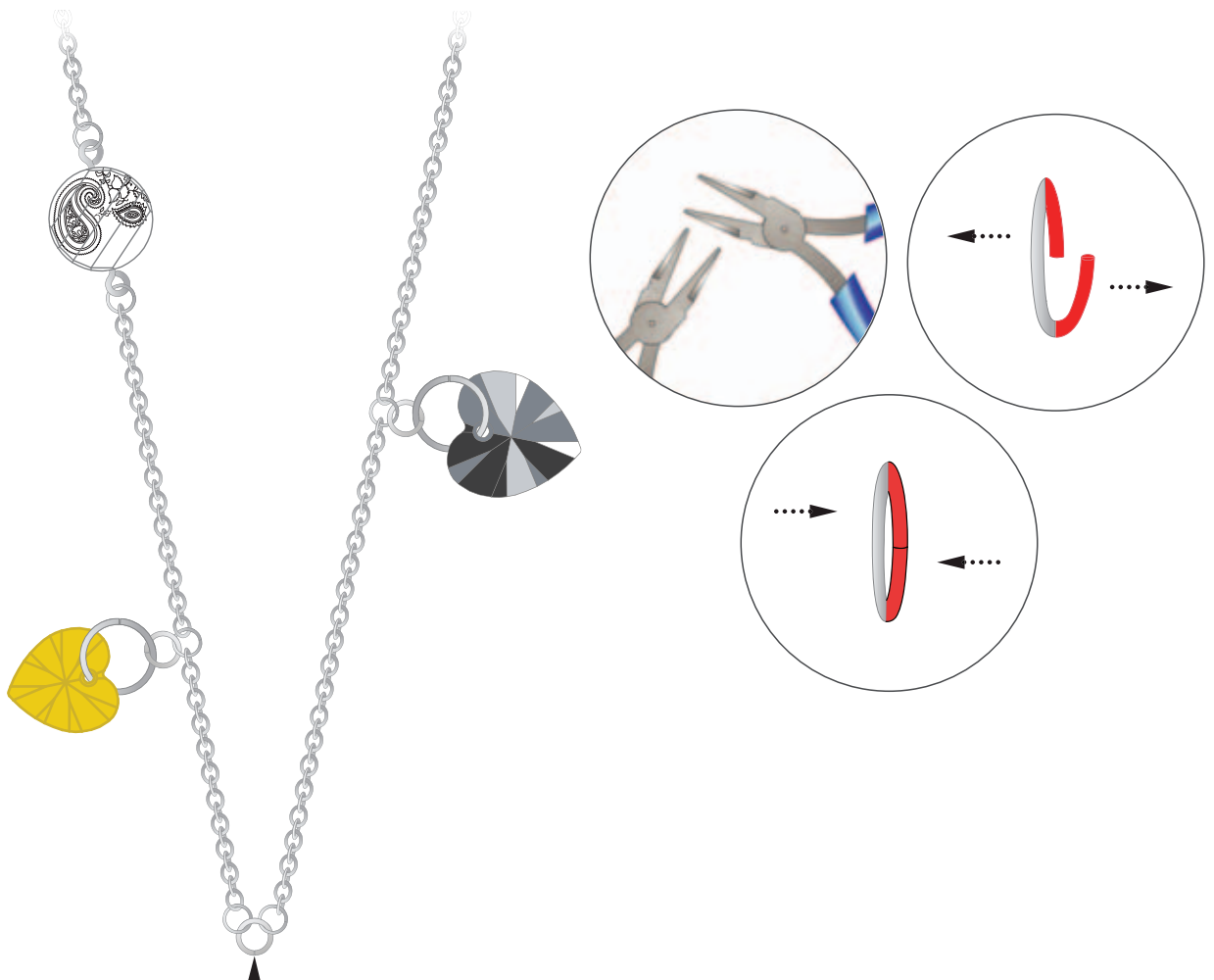
STEP 7



STEP 8



STEP 9



STEP 10



CREATE YOUR STYLE with SWAROVSKI ELEMENTS Design Project

Valentine's Day Necklace "Key to my heart"

- STEP 1: Glue the Swarovski Flat Backs art. 2028 onto the key as shown in the illustrations in this step.
- STEP 2: Cut out 10cm silver wire (0.8mm) and wind it around a pen to a diameter of 9.5mm. Cut into the spiral to get two jump rings of 9.5mm size.
- STEP 3: Cut two pieces of chain for side A; one to 32cm and another to 6.5cm size. For side B 27.5cm, 4.5cm and 3.5cm. Attach the two chains of side A with using a 4mm jump ring and attach 4mm jump rings to both ends of the chain.
- STEP 4: Attach a 6mm jump ring to the first 4mm jump ring in the chain and a 5mm jump ring to the second 4mm jump ring in the chain as depicted in the illustration in this step.
- STEP 5: Attach a Swarovski Heart Pendant art. 6228 Silver Night Crystal to the jump ring in the middle of the chain using one of the 9.5mm jump rings made in step 2.
- STEP 6: Cut out 10cm silver wire (0.8mm), bend a loop on end of it and insert one Swarovski Bead art. 5621 Crystal Paisley print onto it. Bend the other end of the wire to form a loop.
- STEP 7: Attach the 27.5cm silver chain to the lobster clasp using of a jump ring and also attach the 4.5 and 3.5cm long chains using 4mm jump rings. Attach jump rings to all the ends of these chains. Attach a 5mm jump ring as being shown in the illustration in this step.
- STEP 8: Attach both loops of the previously prepared Swarovski Pendant Paisley print to complete the link in between the chains linked together in the previous step. Attach a Swarovski Pendant art. 6228 Sunflower to the 5mm jump ring using the last 9.5mm jump ring made in step 2.
- STEP 9: Connect the side A and side B chains using a 5mm jump ring as shown in this step.
- STEP 10: Attach the key to the 5mm jump ring of the chain using a 6mm jump ring as shown.