

CREATE  
YOUR STYLE with  
CRYSTALLIZED™  
- Swarovski Elements

DESIGN PROJECT  
SUMMER HOLIDAYS  
CHAIN MAIL  
PENDANT



# SUMMER HOLIDAYS CHAIN MAIL PENDANT

## CRYSTALLIZED™ – Swarovski Elements

## Supplies & Tools

Article	Product Group	Article No.	Amount	Size	Colour	Colour Code
	Pendants	6904	1 pc.	45 mm	Crystal Silver Shade	001 SSHA

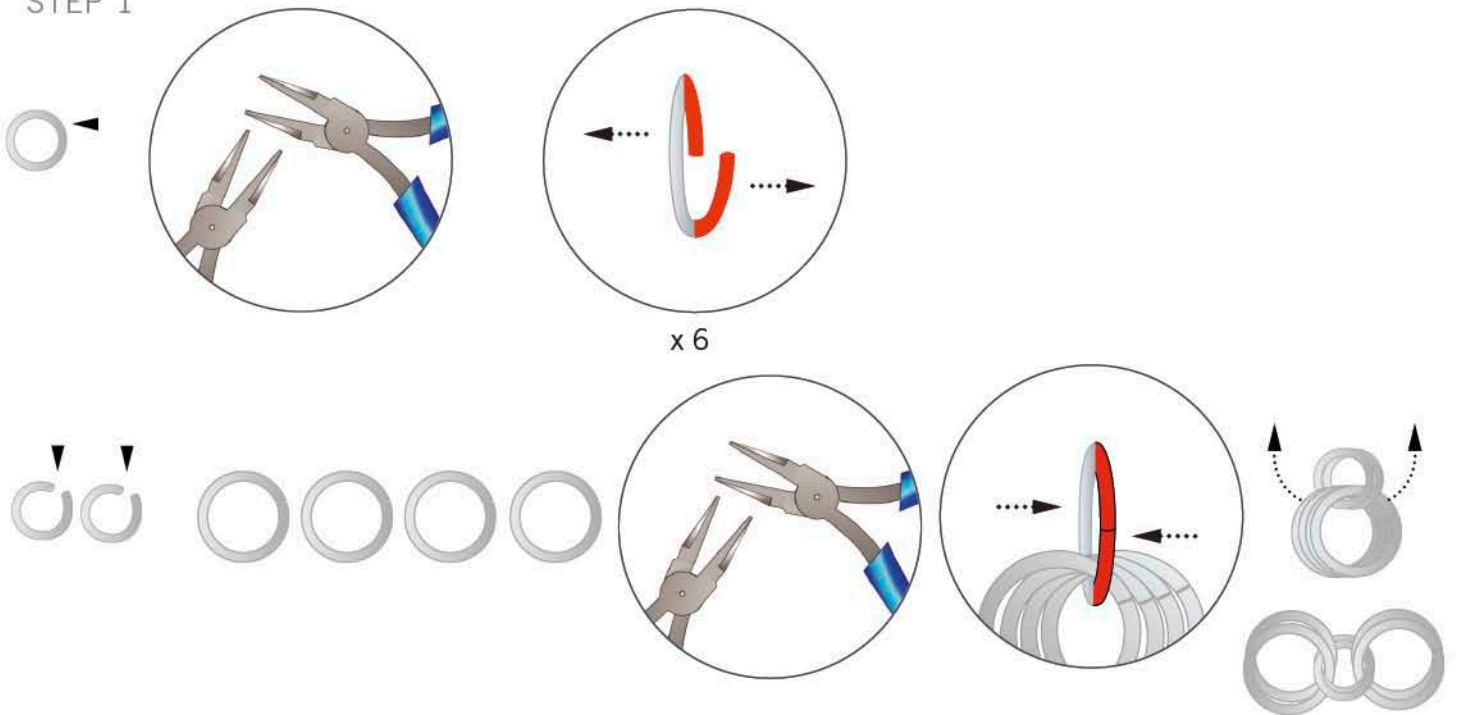
**Supplies**  
 6x Jump rings, 8x 1.2 mm, silver,  
 6x Jump rings, 12x 1.4 mm, silver,  
 1x Jump ring, 18x 2 mm, silver,  
 Waxed cord, 1 mm, beige, 1 m

**Tools**  
 Flat nose pliers  
 Scissors  
 Tweezers

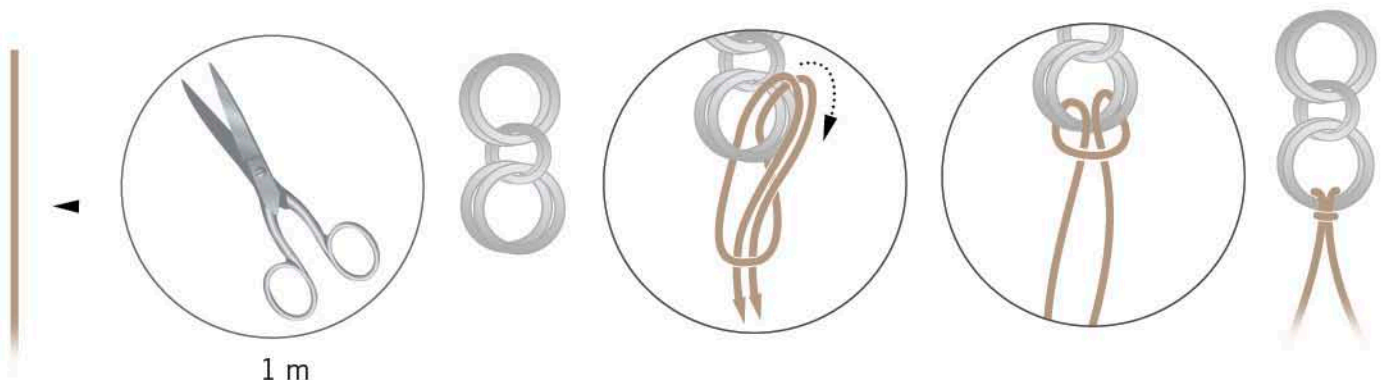
Level of design: BEGINNER

Have also a look at the text instruction at the last page!

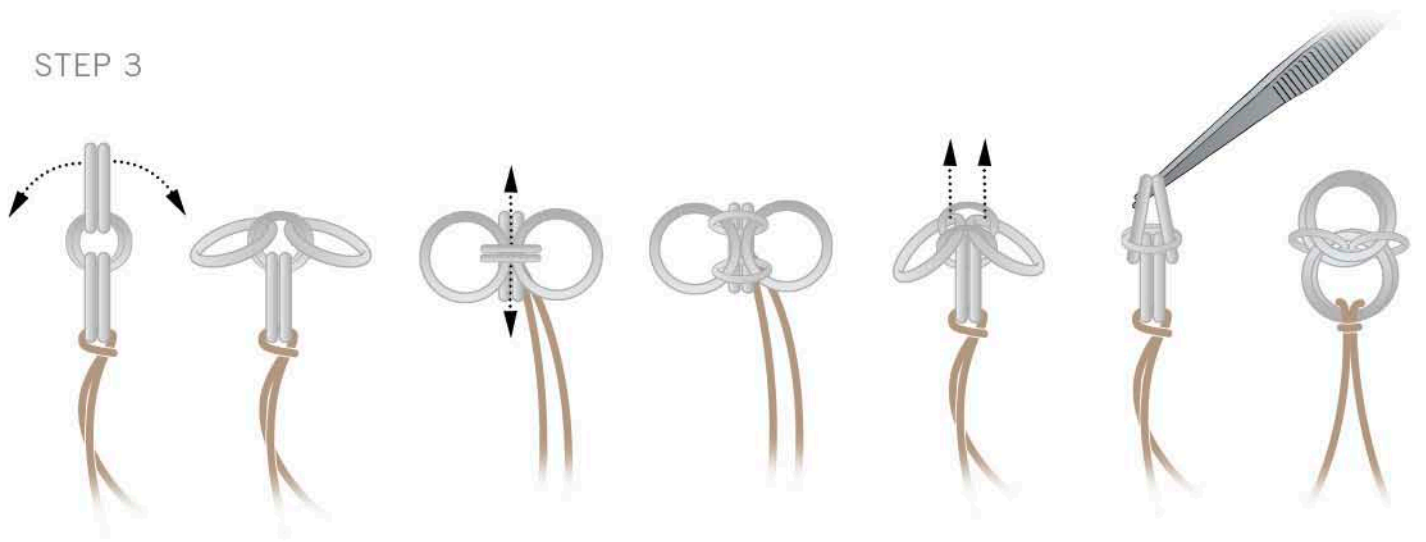
### STEP 1



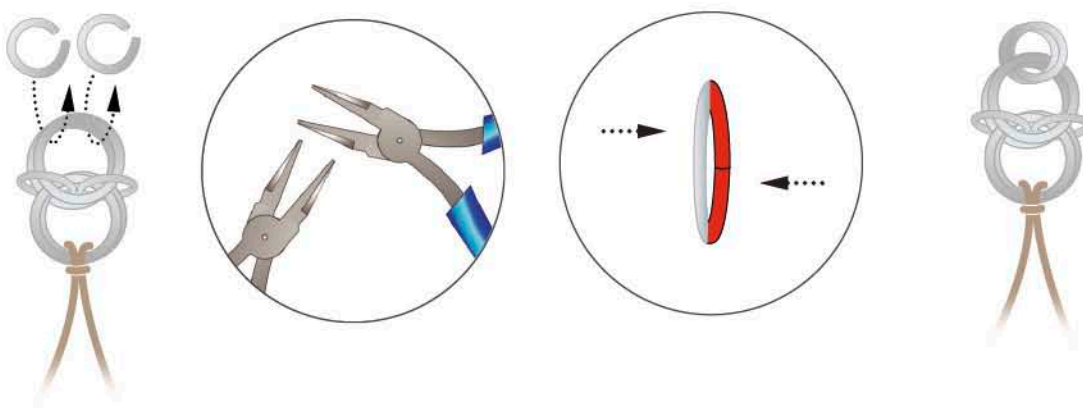
### STEP 2



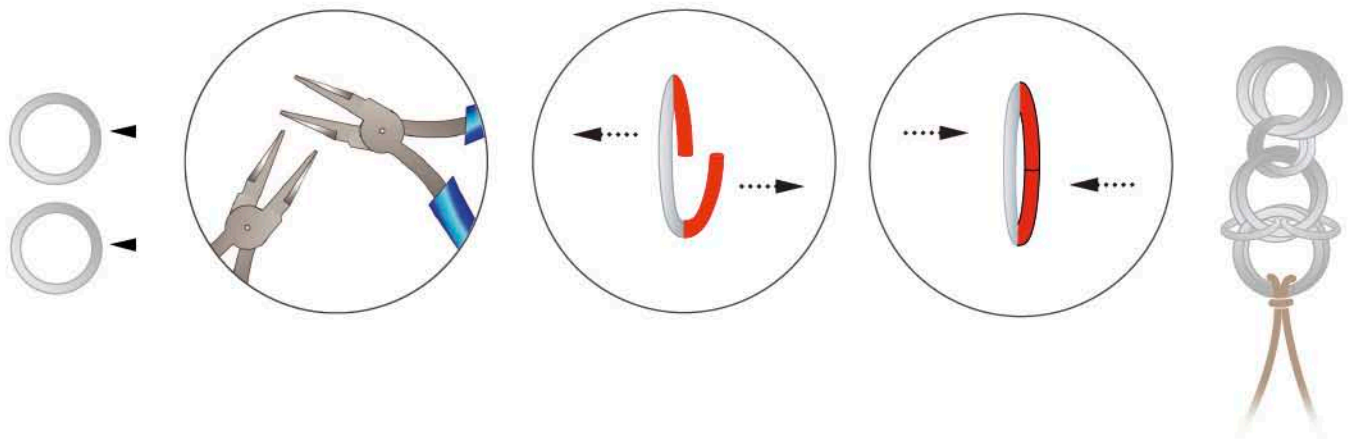
STEP 3



STEP 4



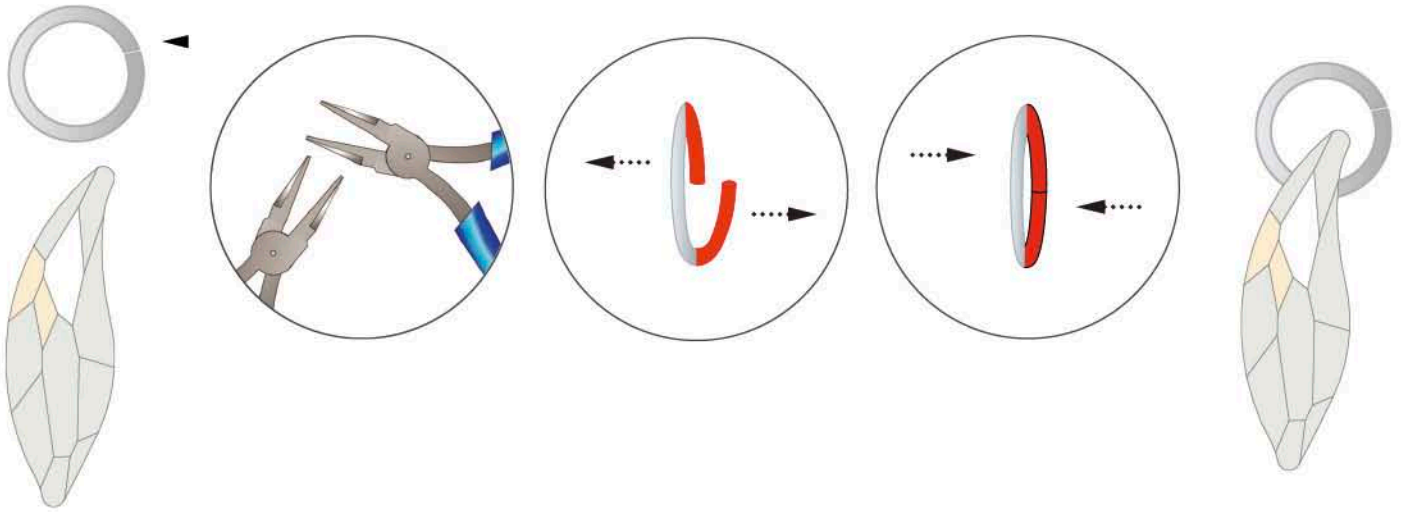
STEP 5



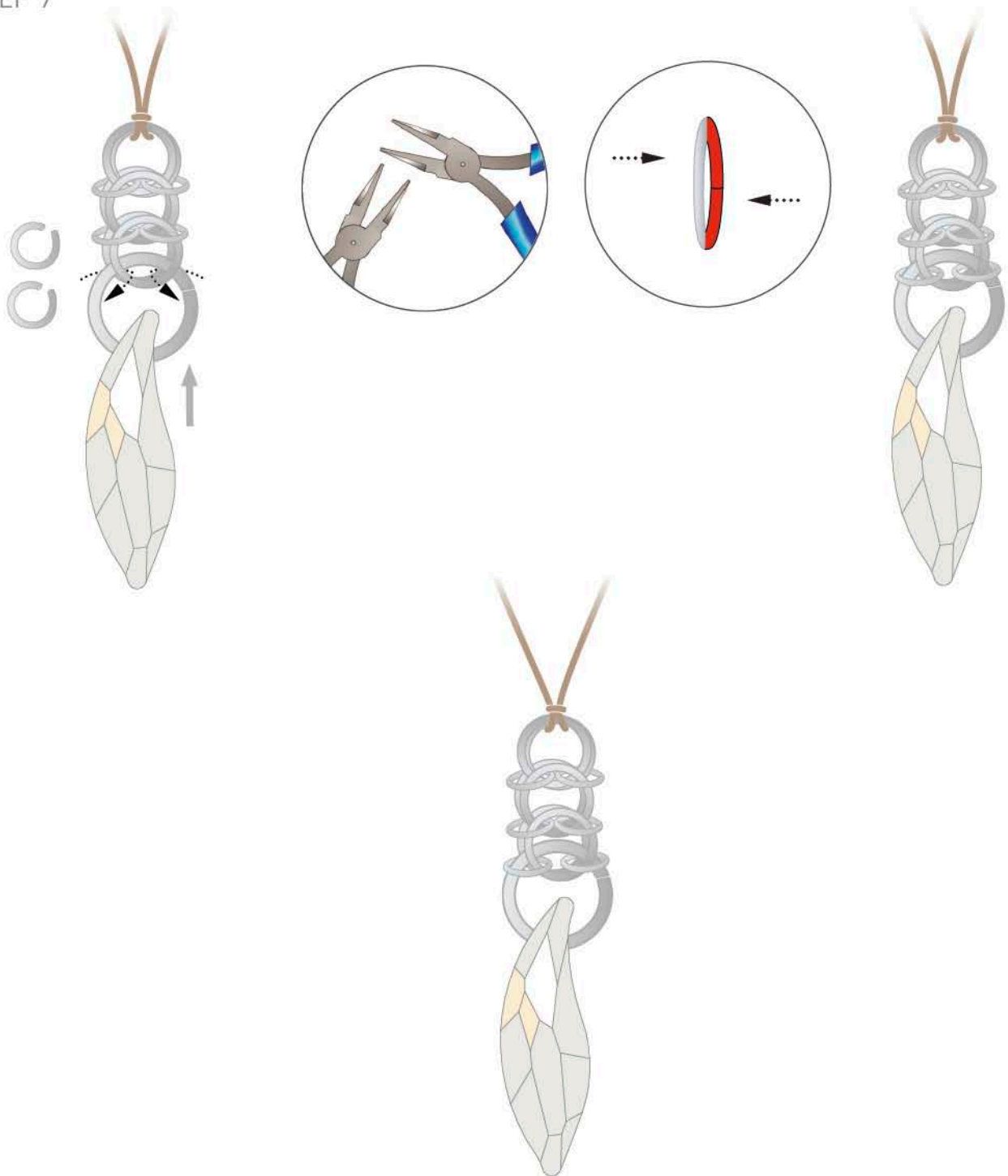
Repeat step 3:



STEP 6



STEP 7



## CREATE YOUR STYLE with CRYSTALLIZED™ – *Swarovski Elements* Design Project

### Summer Holidays Chain Mail Pendant

- STEP 1: Open all 6 of the 8 mm jump rings with flat nose pliers. Attach four 12 mm closed jump rings to two of the 8 mm open rings as shown in illustration. Close the small rings. Arrange your rings into three pairs of two.
- STEP 2: Attach the waxed cord to one end of the jump rings (as shown in the illustration).
- STEP 3: Fold the two 12 mm rings that are not attached to the cord back, away from each other. Slide the two small rings – which are now on top – fully to each side. Pull the inside part of the 12 mm jump rings to the top with tweezers (see 5th and 6th picture in illustration).
- STEP 4: Place two open 8 mm jump rings around the 12 mm jump rings and close them.
- STEP 5: Open two 12 mm jump rings and add them to the small ones added in the last step. Repeat step 3 with the two 12 mm and two 8 mm jump rings on top (result is shown in the illustration).
- STEP 6: Open the 18 mm jump ring and hang it into the CRYSTALLIZED™ Pendant article 6904 45 mm in Crystal Silver Shade.
- STEP 7: Slide the 18 mm jump ring with the CRYSTALLIZED™ Pendant between the two 12 mm jump rings as shown in the illustration. Take the last two open 8 mm jump rings and close one on the left side of both the 12 mm and the 18 mm jump rings and one on the right side of both the 12 mm and 18 mm jump rings.